

# OptaWeb Employee Rostering User Guide

The OptaPlanner Team

Version 7.14.1-SNAPSHOT

# Table of Contents

- 1. OptaWeb Employee Rostering Introduction ..... 1
  - 1.1. What is OptaWeb Employee Rostering? ..... 1
  - 1.2. System Properties ..... 1
- 2. Architecture ..... 2

# Chapter 1. OptaWeb Employee Rostering

## Introduction

### 1.1. What is OptaWeb Employee Rostering?

Every organization faces planning problems: providing products or services with a limited set of *constrained* resources (employees, assets, time and money). One such planning problem is employee shift rostering: assigning shifts to employees. OptaWeb is a web application and REST service that solves employee shift rostering problems using the [OptaPlanner engine](#).

### 1.2. System Properties

These system properties can overwrite default properties of the application, for example as `-Doptaweb.generator.zoneId="America/New_York"` to WildFly. These system properties might also be exposed as OpenShift template parameters.

- **optaweb.generator.timeZoneId:** The time zone ID for the automatically generated tenants. For example `America/New_York`. This defaults to the system default Zone ID.

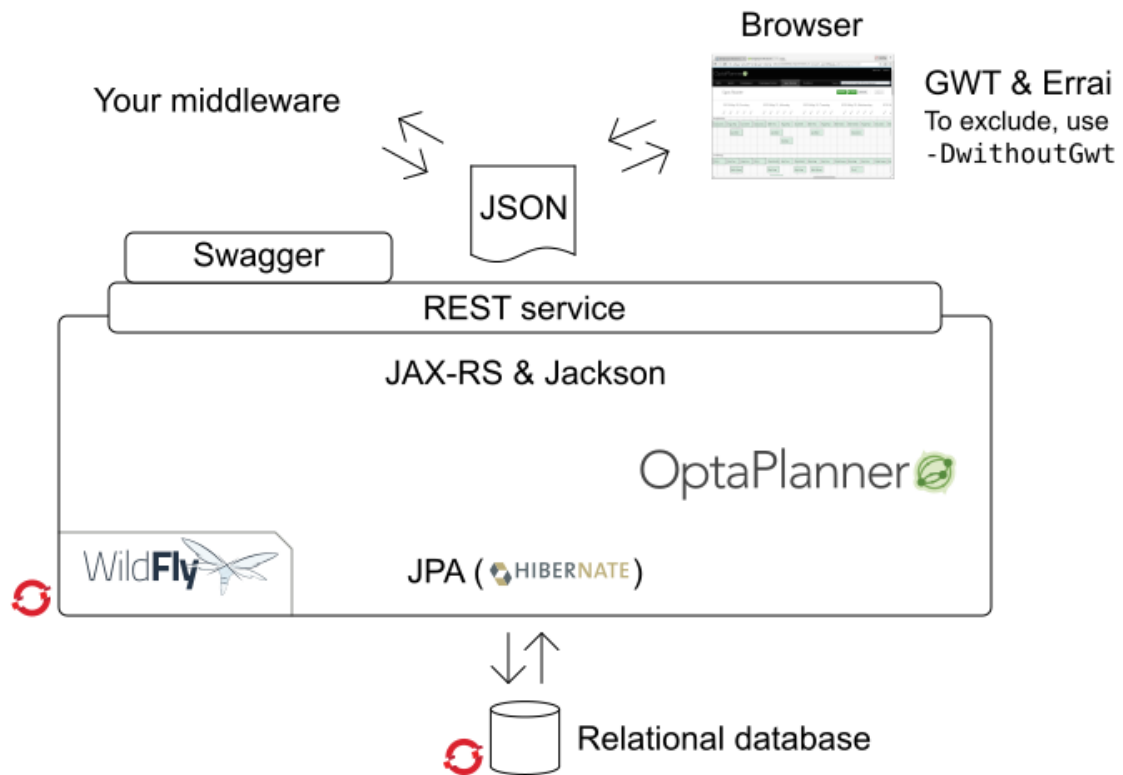
The OpenShift docker image also supports these parameters:

- **org.optaweb.employee rostering.persistance.datasource**
- **org.optaweb.employee rostering.persistance.dialect**
- **org.optaweb.employee rostering.persistance.hbm2ddl.auto**
- **org.optaweb.employee rostering.persistance.id.generator**

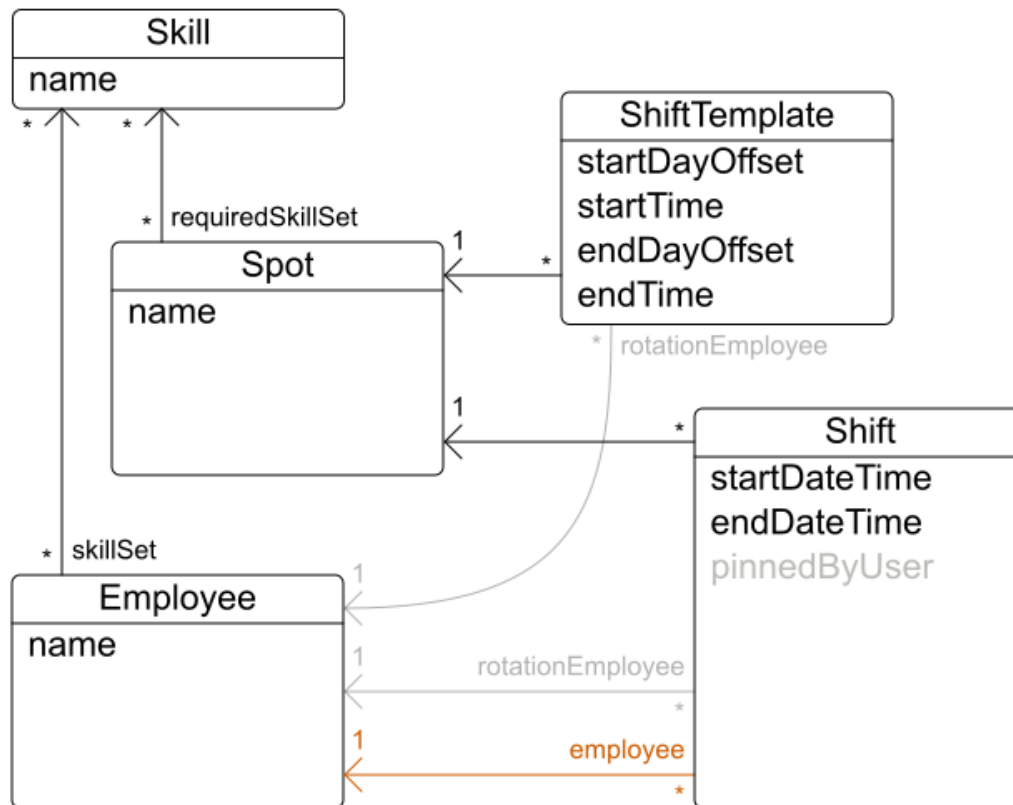
# Chapter 2. Architecture

## OptaWeb Employee Rostering Architecture

Use the powerful REST interface or the user friendly web interface.



# OptaWeb Employee Rostering class diagram



# Solving with OptaPlanner

OptaPlanner automatically assigns the shifts, according to our constraints.

