

SS7 Stack User Guide

The guide to the JBoss Communications SS7 Stack

by Amit Bhayani, Bartosz Baranowski, and Oleg Kulikov

Preface	v
1. Document Conventions	v
1.1. Typographic Conventions	v
1.2. Pull-quote Conventions	vii
1.3. Notes and Warnings	vii
2. Provide feedback to the authors!	viii
1. Introduction to JBoss Communications SS7 Stack	1
1.1. Time Division Multiplexing	2
2. The Basics	3
2.1. Shell Management client	6
2.2. SS7 Service	6
2.3. JBoss Communications SS7 Stack Usage	7
2.4. JBoss Communications Signaling Gateway	8
2.4.1. JBoss Communications M3UA Stack	9
3. Installation and Running	13
3.1. Installing	13
3.1.1. Binary	13
3.2. Installing JBoss Communications SS7 Service Binary	16
3.3. Running JBoss Communications SS7 Service	16
3.3.1. Starting	17
3.3.2. Stopping	17
3.4. Configuring JBoss Communications SS7 Service	18
3.4.1. Configuring M3UA	18
3.4.2. Configuring dahdi	19
3.4.3. Configuring dialogic	20
3.4.4. Configuring ShellExecutor	21
3.4.5. Configuring SCCP	22
3.4.6. Configuring SS7Service	23
3.5. Installing JBoss Communications Signaling Gateway Binary	24
3.6. Running JBoss Communications Signaling Gateway	24
3.6.1. Starting JBoss Communications Signaling Gateway	24
3.6.2. Start the Gateway With Alternate Configuration	25
3.6.3. Stopping	25
3.7. Configuring JBoss Communications Signaling Gateway	25
3.7.1. Configuring Signaling Gateway Process	25
3.7.2. Configuring LinksetFactory	26
3.7.3. Configuring LinksetManager	27
3.7.4. Configuring ShellExecutor	28
3.7.5. Configuring SignalingGateway	28
3.8. Setup from source	29
3.8.1. Release Source Code Building	29
3.8.2. Development Trunk Source Building	31
4. Hardware Setup	33
4.1. Sangoma	33

4.2. Diguim	33
4.3. Dialogic	33
5. Shell Command Line	35
5.1. Introduction	35
5.2. Starting	35
5.3. Linkset Management	36
5.3.1. Create Linkset	37
5.3.2. Remove Linkset	38
5.3.3. Activate Linkset	38
5.3.4. Deactivate Linkset	39
5.3.5. Create Link	39
5.3.6. Remove Link	40
5.3.7. Activate Link	41
5.3.8. Deactivate Link	41
5.3.9. Show status	42
5.4. SCCP Management	42
5.4.1. Rule Management	43
5.4.2. Address Management	47
5.4.3. Remote Signaling Point Management	51
5.4.4. Remote Sub-System Management	52
5.5. M3UA Management	54
5.5.1. M3UA Management - SGW side	54
5.5.2. M3UA Management - AS side	57
6. ISUP	63
6.1. ISUP Configuration	63
6.2. ISUP Usage	65
6.3. ISUP Example	65
7. SCCP	69
7.1. Routing Management	69
7.1.1. GTT Configuration	69
7.2. SCCP Usage	73
7.3. Access Point	74
7.4. SCCP User Part Example	74
8. TCAP	77
8.1. JBoss Communications SS7 Stack TCAP Usage	77
8.2. JBoss Communications SS7 Stack TCAP User Part Example	79
9. MAP	83
9.1. SS7 Stack MAP Usage	83
9.2. SS7 Stack MAP Usage	86
A. Java Development Kit (JDK): Installing, Configuring and Running	91
B. Setting the JBOSS_HOME Environment Variable	95
C. Revision History	99
Index	101

Preface

1. Document Conventions

This manual uses several conventions to highlight certain words and phrases and draw attention to specific pieces of information.

In PDF and paper editions, this manual uses typefaces drawn from the [Liberation Fonts](https://fedorahosted.org/liberation-fonts/) [https://fedorahosted.org/liberation-fonts/] set. The Liberation Fonts set is also used in HTML editions if the set is installed on your system. If not, alternative but equivalent typefaces are displayed. Note: Red Hat Enterprise Linux 5 and later includes the Liberation Fonts set by default.

1.1. Typographic Conventions

Four typographic conventions are used to call attention to specific words and phrases. These conventions, and the circumstances they apply to, are as follows.

Mono-spaced Bold

Used to highlight system input, including shell commands, file names and paths. Also used to highlight key caps and key-combinations. For example:

To see the contents of the file `my_next_bestselling_novel` in your current working directory, enter the `cat my_next_bestselling_novel` command at the shell prompt and press **Enter** to execute the command.

The above includes a file name, a shell command and a key cap, all presented in Mono-spaced Bold and all distinguishable thanks to context.

Key-combinations can be distinguished from key caps by the hyphen connecting each part of a key-combination. For example:

Press **Enter** to execute the command.

Press **Ctrl+Alt+F1** to switch to the first virtual terminal. Press **Ctrl+Alt+F7** to return to your X-Windows session.

The first sentence highlights the particular key cap to press. The second highlights two sets of three key caps, each set pressed simultaneously.

If source code is discussed, class names, methods, functions, variable names and returned values mentioned within a paragraph will be presented as above, in **Mono-spaced Bold**. For example:

File-related classes include `filesystem` for file systems, `file` for files, and `dir` for directories. Each class has its own associated set of permissions.

Proportional Bold

This denotes words or phrases encountered on a system, including application names; dialogue box text; labelled buttons; check-box and radio button labels; menu titles and sub-menu titles. For example:

Choose **System > Preferences > Mouse** from the main menu bar to launch **Mouse Preferences**. In the **Buttons** tab, click the **Left-handed mouse** check box and click **Close** to switch the primary mouse button from the left to the right (making the mouse suitable for use in the left hand).

To insert a special character into a **gedit** file, choose **Applications > Accessories > Character Map** from the main menu bar. Next, choose **Search > Find** from the **Character Map** menu bar, type the name of the character in the **Search** field and click **Next**. The character you sought will be highlighted in the **Character Table**. Double-click this highlighted character to place it in the **Text to copy** field and then click the **Copy** button. Now switch back to your document and choose **Edit > Paste** from the **gedit** menu bar.

The above text includes application names; system-wide menu names and items; application-specific menu names; and buttons and text found within a GUI interface, all presented in Proportional Bold and all distinguishable by context.

Note the **>** shorthand used to indicate traversal through a menu and its sub-menus. This is to avoid the difficult-to-follow 'Select **Mouse** from the **Preferences** sub-menu in the **System** menu of the main menu bar' approach.

Mono-spaced Bold Italic Of Proportional Bold Italic

Whether Mono-spaced Bold or Proportional Bold, the addition of Italics indicates replaceable or variable text. Italics denotes text you do not input literally or displayed text that changes depending on circumstance. For example:

To connect to a remote machine using ssh, type `ssh username@domain.name` at a shell prompt. If the remote machine is `example.com` and your username on that machine is john, type `ssh john@example.com`.

The `mount -o remount file-system` command remounts the named file system. For example, to remount the `/home` file system, the command is `mount -o remount /home`.

To see the version of a currently installed package, use the `rpm -q package` command. It will return a result as follows: `package-version-release`.

Note the words in bold italics above `username`, `domain.name`, `file-system`, `package`, `version` and `release`. Each word is a placeholder, either for text you enter when issuing a command or for text displayed by the system.

Aside from standard usage for presenting the title of a work, italics denotes the first use of a new and important term. For example:

When the Apache HTTP Server accepts requests, it dispatches child processes or threads to handle them. This group of child processes or threads is known as

a *server-pool*. Under Apache HTTP Server 2.0, the responsibility for creating and maintaining these server-pools has been abstracted to a group of modules called *Multi-Processing Modules (MPMs)*. Unlike other modules, only one module from the MPM group can be loaded by the Apache HTTP Server.

1.2. Pull-quote Conventions

Two, commonly multi-line, data types are set off visually from the surrounding text.

Output sent to a terminal is set in `Mono-spaced Roman` and presented thus:

```
books      Desktop  documentation  drafts  mss    photos  stuff  svn
books_tests Desktop1  downloads      images  notes  scripts svgs
```

Source-code listings are also set in `Mono-spaced Roman` but are presented and highlighted as follows:

```
package org.jboss.book.jca.ex1;

import javax.naming.InitialContext;

public class ExClient
{
    public static void main(String args[])
        throws Exception
    {
        InitialContext iniCtx = new InitialContext();
        Object      ref  = iniCtx.lookup("EchoBean");
        EchoHome    home = (EchoHome) ref;
        Echo        echo = home.create();

        System.out.println("Created Echo");

        System.out.println("Echo.echo('Hello') = " + echo.echo("Hello"));
    }
}
```

1.3. Notes and Warnings

Finally, we use three visual styles to draw attention to information that might otherwise be overlooked.



Note

A note is a tip or shortcut or alternative approach to the task at hand. Ignoring a note should have no negative consequences, but you might miss out on a trick that makes your life easier.



Important

Important boxes detail things that are easily missed: configuration changes that only apply to the current session, or services that need restarting before an update will apply. Ignoring Important boxes won't cause data loss but may cause irritation and frustration.



Warning

A Warning should not be ignored. Ignoring warnings will most likely cause data loss.

2. Provide feedback to the authors!

If you find a typographical error in this manual, or if you have thought of a way to make this manual better, we would love to hear from you! Please submit a report in the the [Issue Tracker](http://bugzilla.redhat.com/bugzilla/) [http://bugzilla.redhat.com/bugzilla/], against the product **JBoss Communications SS7 Stack** , or contact the authors.

When submitting a bug report, be sure to mention the manual's identifier: SS7Stack_User_Guide

If you have a suggestion for improving the documentation, try to be as specific as possible when describing it. If you have found an error, please include the section number and some of the surrounding text so we can find it easily.

Introduction to JBoss

Communications SS7 Stack

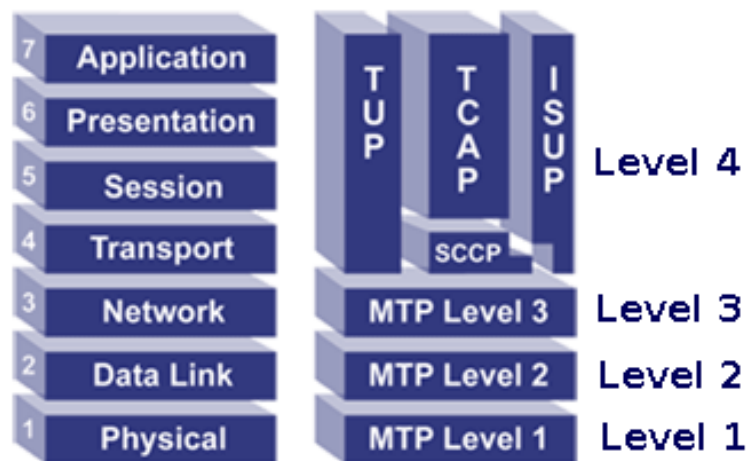


Important

Spaces were introduced in in some tables and code listings to ensure proper page render.

Common Channel Signaling System No. 7 (i.e., SS7 or C7) is a global standard for telecommunications defined by the [International Telecommunication Union \(ITU\) Telecommunication Standardization Sector \(ITU-T\)](http://www.voip-info.org/wiki/view/ITU) [http://www.voip-info.org/wiki/view/ITU]. The standard defines the procedures and protocol by which network elements in the public switched telephone network (PSTN) exchange information over a digital signaling network to effect wireless (cellular) and wireline call setup, routing and control. The ITU definition of SS7 allows for national variants such as the American National Standards Institute (ANSI) and Bell Communications Research (Telcordia Technologies) standards used in North America and the European Telecommunications Standards Institute ([ETSI](http://www.voip-info.org/wiki/view/ETSI) [http://www.voip-info.org/wiki/view/ETSI]) standard used in Europe.

The hardware and software functions of the SS7 protocol are divided into functional abstractions called "levels". These levels map loosely to the Open Systems Interconnect (OSI) 7-layer model defined by the [International Standards Organization \(ISO\)](http://www.iso.ch/) [http://www.iso.ch/].



SS7 Stack overview

JBoss Communications SS7 Stack is software based SS7 protocol implementation providing Level 2 and above. The JBoss Communications SS7 Stack is a platform in the sense that it does not provide the application itself but rather allows users to build the application

1.1. Time Division Multiplexing

In circuit switched networks such as the Public Switched Telephone Network (PSTN) there exists the need to transmit multiple subscribers' calls along the same transmission medium. To accomplish this, network designers make use of TDM. TDM allows switches to create channels, also known as tributaries, within a transmission stream. A standard DS0 voice signal has a data bit rate of 64 kbit/s, determined using Nyquist's sampling criterion. TDM takes frames of the voice signals and multiplexes them into a TDM frame which runs at a higher bandwidth. So if the TDM frame consists of n voice frames, the bandwidth will be $n \times 64$ kbit/s. Each voice sample timeslot in the TDM frame is called a channel. In European systems, TDM frames contain 30 digital voice channels, and in American systems, they contain 24 channels. Both standards also contain extra bits (or bit timeslots) for signalling (SS7) and synchronisation bits. Multiplexing more than 24 or 30 digital voice channels is called higher order multiplexing. Higher order multiplexing is accomplished by multiplexing the standard TDM frames. For example, a European 120 channel TDM frame is formed by multiplexing four standard 30 channel TDM frames. At each higher order multiplex, four TDM frames from the immediate lower order are combined, creating multiplexes with a bandwidth of $n \times 64$ kbit/s, where $n = 120, 480, 1920$, etc.

The Basics



Important

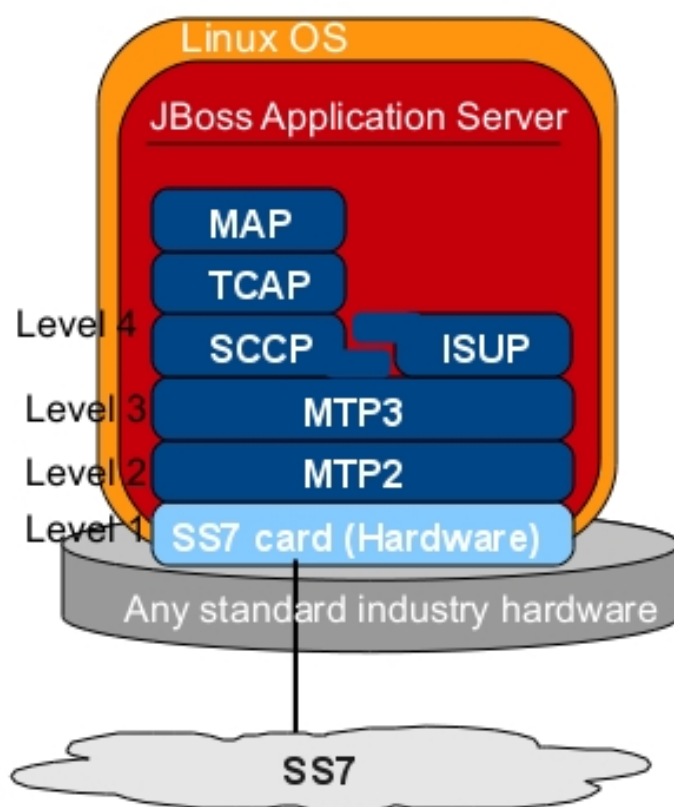
Be aware, JBoss Communications SS7 Stack is subject to changes as it is under active development!

The JBoss Communications SS7 Stack is logically divided into two sections. The lower section includes SS7 Level 3 and below. The lower section is influenced by type of SS7 hardware (Level 1) used.

The upper section includes SS7 Level 4 and above. This logical division is widely based on flexibility of JBoss Communications SS7 Stack to allow usage of any SS7 hardware available in the market and yet JBoss Communications SS7 Stack Level 4 and above remains the same.

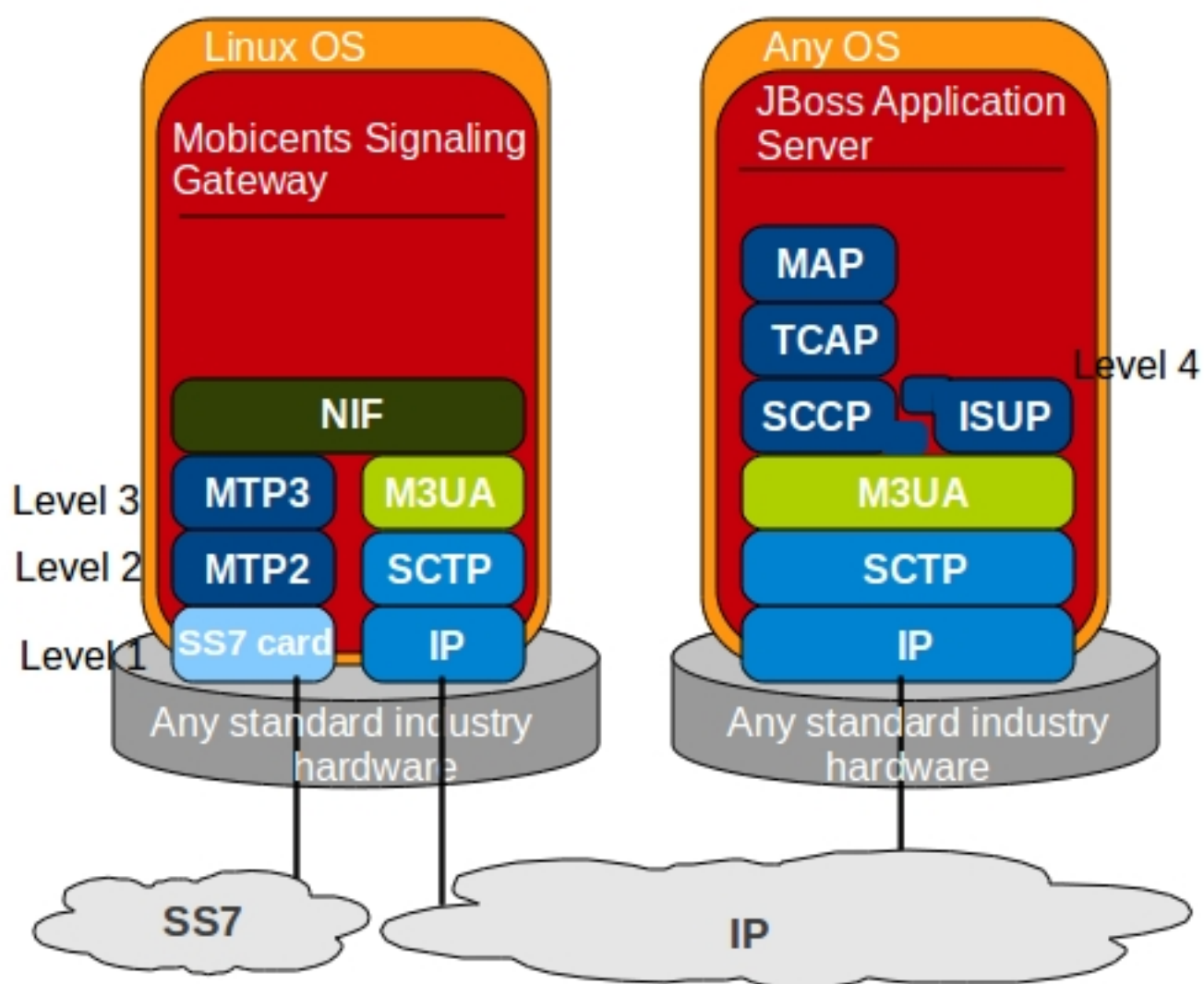
Further JBoss Communications SS7 Stack provides flexibility to use the Level 2,3 and Level 4 in same JVM and in same machine where SS7 Hardware (Level 1) is installed. Or its also possible to have Level 1,2,3 to be installed on separate machine and Level 4 on separate machine. In latter case M3UA over SCTP is leveraged for communication between Level 4 and Level 3 and is called JBoss Communications Signaling Gateway.

Bellow diagram shows complete JBoss Communications SS7 Stack in same machine



JBoss Communications SS7 Stack

Bellow diagram shows JBoss Communications Signaling Gateway



NIF - Nodal Interworking Function

JBoss Communications Signaling Gateway



Important

If you use JBoss Communications M3UA stack, you have to use JDK 7 to run the stack as well as to compile source code. M3UA leverages Java SCTP which is available only from JDK 7.

Apart from advantages mentioned in

JBoss Communications SS7 Stack consists of following functional blocks:

2.1. Shell Management client

`Shell` is Command Line Interface (CLI) tool which allows to manage different aspects of JBoss Communications SS7 Stack in interactive manner. It connects to different instances of JBoss Communications SS7 Stack which manage `Linksets`, `SCCP` resource, routing and `M3UA`. For detailed information please refer to: [Chapter 5, Shell Command Line](#). Usually `Shell` will be invoked from remote machine(remote to `Linksets` and application protocols).

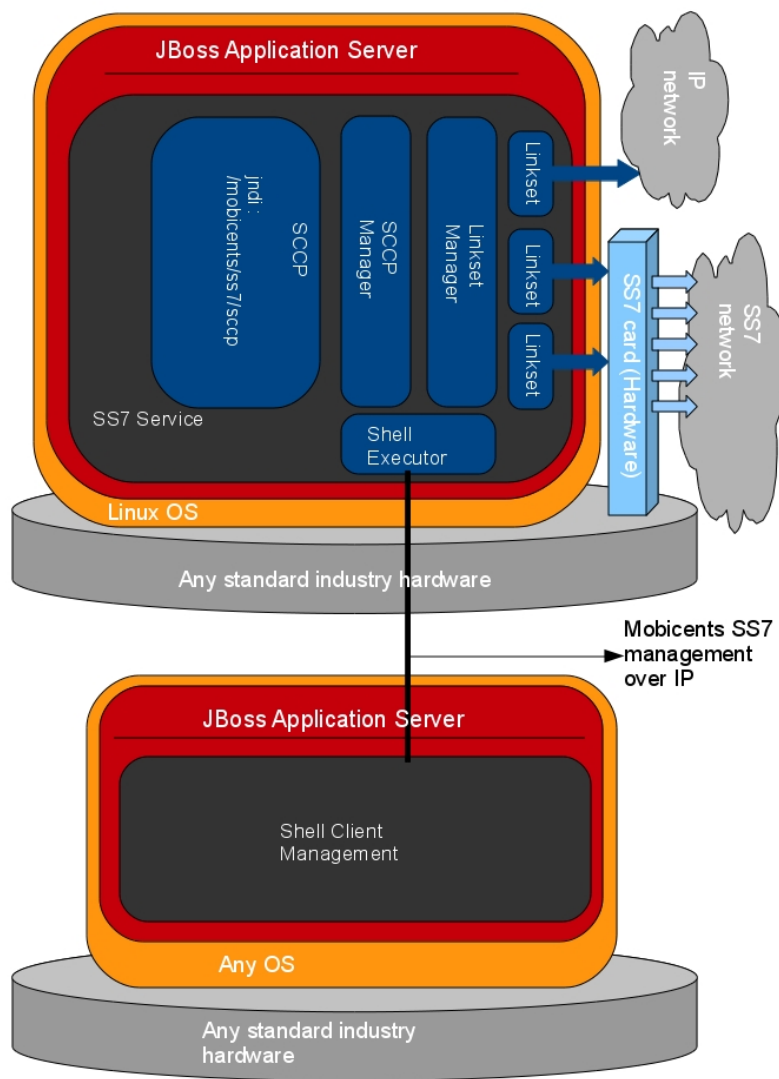
2.2. SS7 Service

SS7 service creates instance of JBoss Communications SCCP Stack and bind's it to JNDI name `java:/mobicents/ss7/sccp`

SS7 Service is JMX based service deployed in JBoss Application Server

SS7 Service hides the details like whether Level 4 and above connects to JBoss Communications Signaling Gateway via M3UA or SS7 Hardware installed in same machine as Level 4

Diagram below depicts elements which are deployed as part of `SS7 Service`:



JBoss Communications SS7 Stack SS7Service elements.

Service serves following purposes:

Expose protocol access points

Access points allows user to access lower layer protocols, like `SCCP` and interact through such protocols with `SS7` network.

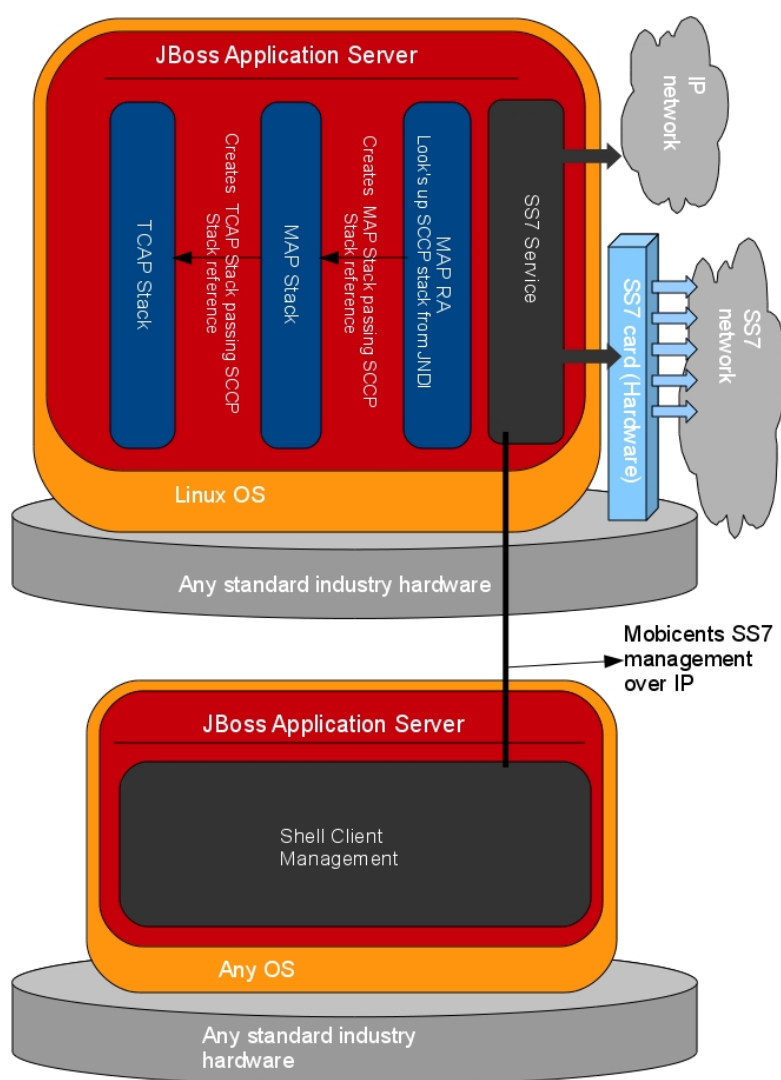
Expose management interface

`Shell Executor` allows `Shell` client to connect and issue commands.

Configuration of `SS7 Service` is explained in section [Section 3.4, “Configuring JBoss Communications SS7 Service”](#)

2.3. JBoss Communications SS7 Stack Usage

Diagram below depicts how JBoss Communications SS7 Stack is used:

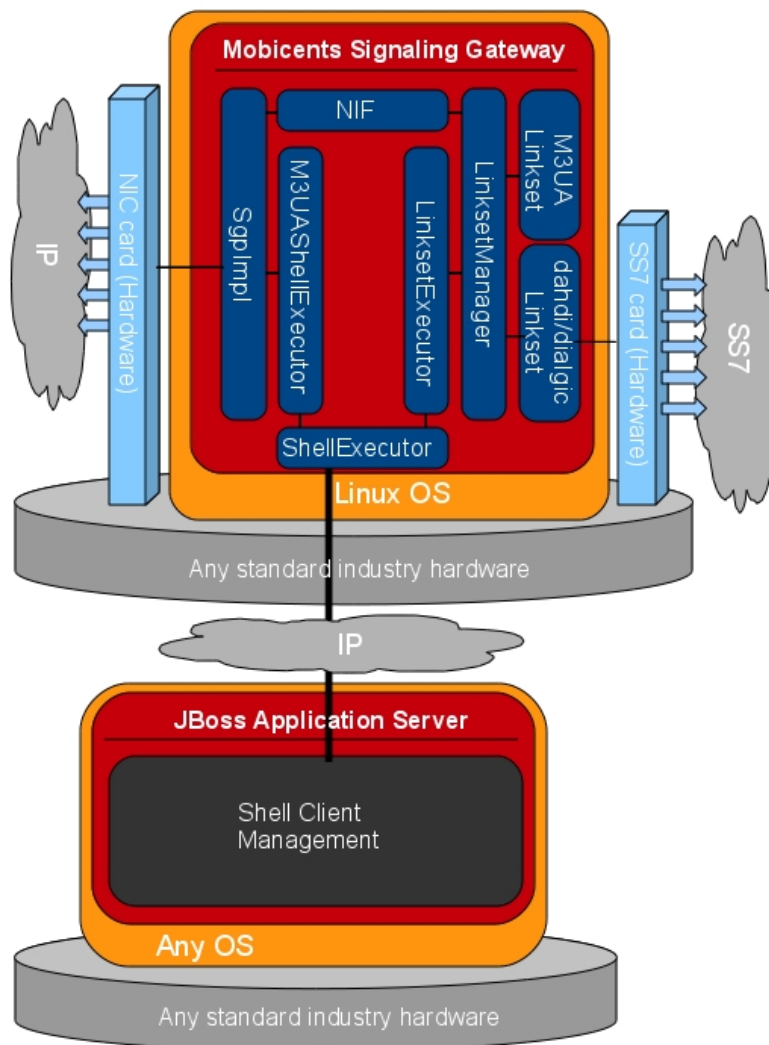


JBoss Communications SS7 Stack general design

2.4. JBoss Communications Signaling Gateway

JBoss Communications Signaling Gateway (SG) is a signaling agent that receives/sends Switched Circuit Network (SCN) native signaling at the edge of the IP network. JBoss Communications Signaling Gateway leverages JBoss Communications M3UA Stack explained in [Section 2.4.1, "JBoss Communications M3UA Stack"](#) and MTP

Diagram below shows the components which are included in JBoss Communications SG. Configuration of SG is explained in [Section 3.7, "Configuring JBoss Communications Signaling Gateway"](#)



JBoss Communications Signaling Gateway components

2.4.1. JBoss Communications M3UA Stack

M3UA is client-server protocol supporting the transport of any SS7 MTP3-User signalling (e.g., ISUP and SCCP messages) over IP. M3UA is defined by the IETF SIGTRAN working group in RFC 4666. JBoss Communications M3UA Stack can be used on Application Server side or can be used on Signaling Gateway side.

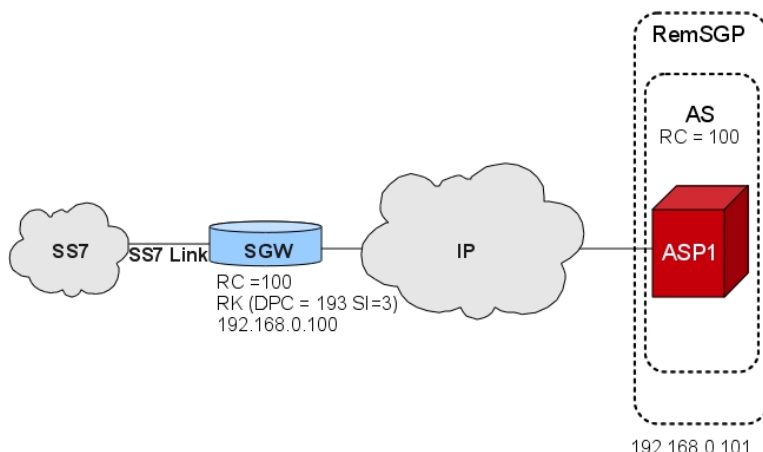


Note

JBoss Communications M3UA Stack uses Java SCTP layer which is available from JDK 7 onwards

2.4.1.1. JBoss Communications M3UA Stack on AS side

Diagram below demonstrates the JBoss Communications M3UA Stack used on Application Server (AS) side. The information below explains the basic functionality of the JBoss Communications M3UA Stack when used as an Application Server which will communicate with an External Signaling Gateway

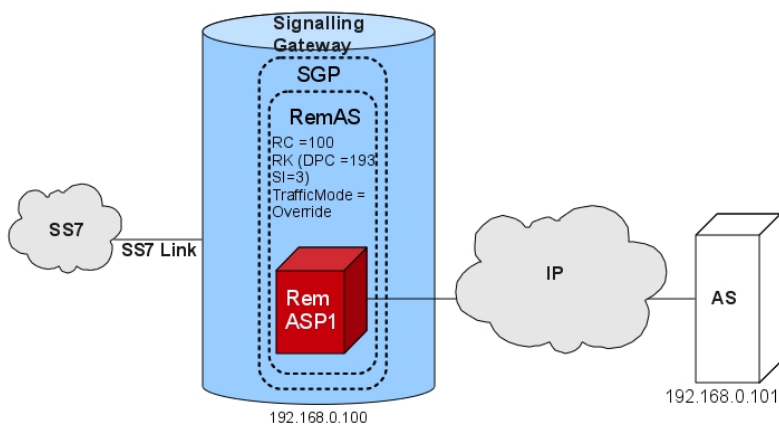


JBoss Communications M3UA Stack configured on AS side

To use M3UA Stack as AS, the Routing Context (RC) must be known. See [Section 3.4.1, "Configuring M3UA"](#) for configuring M3UA Stack as AS.

2.4.1.2. JBoss Communications M3UA Stack on SG side

Diagram below demonstrates the JBoss Communications M3UA Stack used on Signaling Gateway (SG) side. The JBoss Communications Signaling Gateway provides the Nodal Interworking Function (NIF) that allows SS7 Signaling (SCCP/ISUP) to be inter-worked into the M3UA/IP Network as shown in [Section 2.4, "JBoss Communications Signaling Gateway"](#)



JBoss Communications M3UA Stack configured on SG side

JBoss Communications M3UA Stack used on SG side will share common point code with a set of M3UA Application Server. M3UA stack on SG side can be configured as Loadbalance or Override traffic mode. It doesn't support Broadcast traffic mode. See Section [Section 3.7, “Configuring JBoss Communications Signaling Gateway”](#) for configuring M3UA Stack as SG. JBoss Communications M3UA Stack used on SG side doesn't support routing key management messages. The Routing Key should be provisioned statically using the management console.

Installation and Running

3.1. Installing

JBoss Communications SS7 stack at its core requires only Java if you are using only M3UA. However if you plan to use dahdi or dialogic SS7 hardware, respective SS7 cards needs to be installed on the server along with native libraries.

A simple way to get started is to download and install binary. This will provide you with all the dependencies you need to get going. You can obtain binary release from NOT AVAILABLE

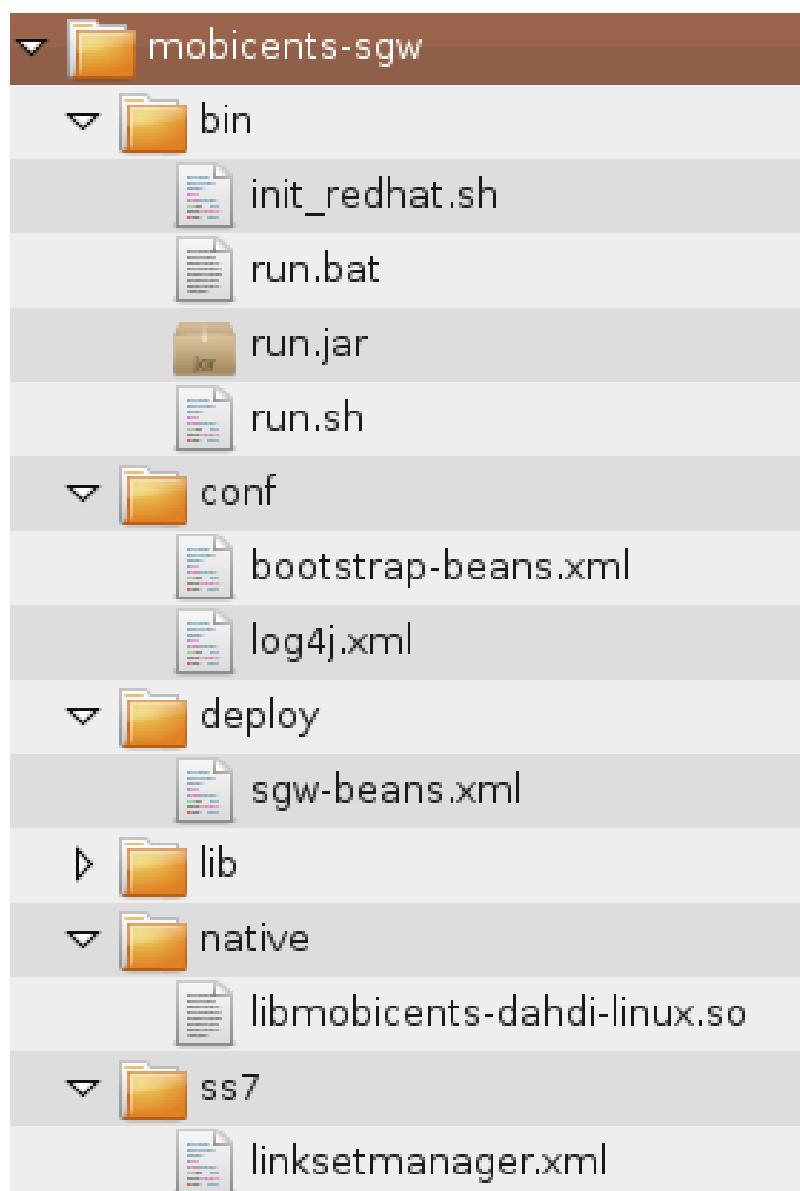
3.1.1. Binary

The JBoss Communications SS7 Stack binary is broken down into a few modules.

The following is a description of the important services and libraries that make up JBoss Communications SS7 Stack

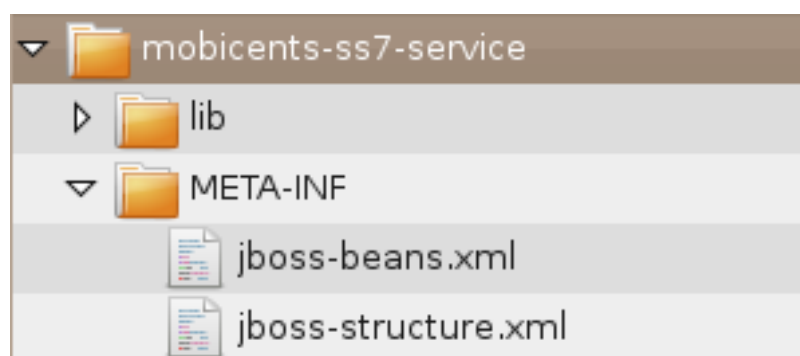
- `asn` : Abstract Syntax Notation One (ASN.1) library is used by various JBoss Communications SS7 Stack protocols to encode/decode the structured data exchanged between Signaling Point over networks. To know more about `asn` library refer to document included with `asn`. Applications using any of the JBoss Communications SS7 Stack User Protocols may never need to call `asn` API directly, however it must be in classpath as JBoss Communications SS7 Stack User Protocols refers this library.
- `ss7` : `ss7` contains the service that is deployed in JBoss AS and libraries that end applications refers to. It also includes JBoss Communications Signaling Gateway. The sub-modules included in `ss7` are
 - `docs` : User guide for JBoss Communications SS7 Stack
 - `mobicents-sgw` : Standalone Signaling Gateway as explained in section [Section 2.4, “JBoss Communications Signaling Gateway”](#)

`mobicents-sgw` binary has following layout:



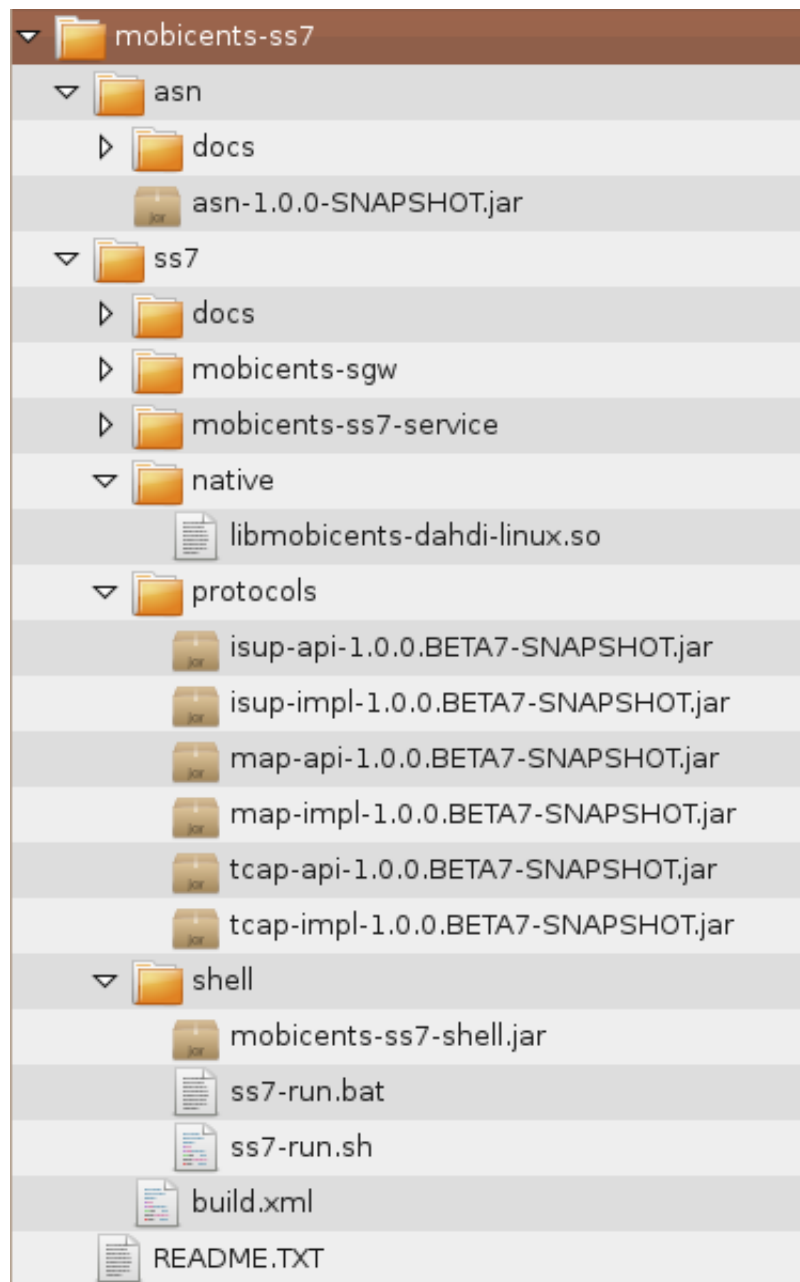
- `mobicents-ss7-service` : SS7 service is the core engine as explained in section [Section 2.2](#), “SS7 Service”

`mobicents-ss7-service` binary has following layout:



- `native` : native libraries component to interact with SS7 Card installed on server, runtime component. As of now native libraries are compiled only for linux OS. However if you plan to use M3UA there is no dependency on OS as everything is 100% java.
- `protocols` : The JBoss Communications SS7 Stack User Protocols libraries. Your application would directly call the API's exposed by these libraries. Depending on application you may be either interested in `TCAP`, `MAP` or both or `ISUP` libraries
- `shell` : the Command Line Interface (CLI) module to manage the JBoss Communications SS7 Stack. Refer [Chapter 5, Shell Command Line](#) to understand how to use shell

Binary release has following layout:



JBoss Communications SS7 Stack binary layout.

3.2. Installing JBoss Communications SS7 Service Binary

The upper layers of Mobicents SS7 viz., TCAP, MAP depends on JBoss Communications SS7 Service and JBoss Communications SS7 Service must be installed before upper layers can be used. The JBoss Communications SS7 Service binary requires that you have JBoss Application Server installed and JBOSS_HOME system property set. To know further details on setting JBOSS_HOME look [Appendix B, Setting the JBOSS_HOME Environment Variable](#)

Once JBOSS_HOME is properly set, use ant to deploy the mobicents-ss7-service, shell scripts and shell library.



Important

Ant 1.6 (or higher) is used to install the binary. Instructions for using Ant, including install, can be found at <http://ant.apache.org/>

```
[usr]$ cd ss7-1.0.0.BETA9/ss7
[usr]$ ant deploy
```

To undeploy these services

```
[usr]$ cd ss7-1.0.0.BETA9/ss7
[usr]$ ant undeploy
```

While above steps will deploy the necessary ss7 service and shell components, the `java.library.path` should be set to point the directory containing native component or should be copied to JBoss native library path manually. This step is only required if you are using the SS7 board on server.

3.3. Running JBoss Communications SS7 Service

Starting or stopping JBoss Communications SS7 Service is no different than starting or stopping JBoss Application Server

3.3.1. Starting

Once installed, you can run server by executing the `run.sh` (Unix) or `run.bat` (Microsoft Windows) startup scripts in the `<install_directory>/bin` directory (on Unix or Windows). If the service started properly you should see following lines in the Unix terminal or Command Prompt depending on your environment:

```
23:22:26,079 INFO [LinksetManager] SS7 configuration file path /
home/abhayani/workarea/mobicents/jboss-5.1.0.GA/server/default/data/
linksetmanager.xml
23:22:26,141 INFO [LinksetManager] Started LinksetManager
23:22:26,199 INFO [SS7Service] Starting SCCP stack...
23:22:26,229 INFO [SccpStackImpl] Starting ...
23:22:26,230 INFO [RouterImpl] SCCP Router configuration file: /home/
abhayani/workarea/mobicents/jboss-5.1.0.GA/server/default/deploy/mobicents-
ss7-service/sccp-routing.txt
23:22:26,261 INFO [SS7Service] SCCP stack Started. SccpProvider bound to
java:/mobicents/ss7/sccp
23:22:26,261 INFO [ShellExecutor] Starting SS7 management shell environment
23:22:26,270 INFO [ShellExecutor] ShellExecutor listening
at /127.0.0.1:3435
23:22:26,270 INFO [SS7Service] [||||| Mobicents SS7 service
started ]|||||]
```

If you have started `ss7-1.0.0.BETA9` for the first time, `SS7` is not configured. You need to use Shell Client to connect to `ss7-1.0.0.BETA9` as defined in [Chapter 5, Shell Command Line](#). With `CLI` you can configure how service interacts with `SS7` network, that is you configure either installed `SS7` card and its native library, or `M3UA` layer.

Once the configured, the state and configuration of `SS7` is persisted which stands server re-start.

3.3.2. Stopping

You can shut down the server(s) by executing the `shutdown.sh -s` (Unix) or `shutdown.bat -s` (Microsoft Windows) scripts in the `<install_directory>/bin` directory (on Unix or Windows). Note that if you properly stop the server, you will see the following three lines as the last output in the Unix terminal or Command Prompt:

```
[Server] Shutdown complete
Halting VM
```

3.4. Configuring JBoss Communications SS7 Service

Configuration is done through an XML descriptor named `jboss-beans.xml` and is located at `$JBOSS_HOME/server/profile_name/deploy/mobicents-ss7-service/META-INF`, where **profile_name** is the server profile name.

The JBoss Communications SS7 Layer 4 (SCCP, ISUP) leverages either of following MTP layers to exchange signalling messages with remote signalling points

- M3UA
- dahdi
- dialogic

The ss7 service will be configured with either of these services.

3.4.1. Configuring M3UA

`ClientM3UAProcess` is only needed if the underlying SS7 service will leverage M3UA. `ClientM3UAProcess` acts as remote Signaling Gateway Process. `M3UAShellExecutor` accepts the M3UA commands and executes necessary operations. `ClientM3UAManagement` contains the list of Application Server (AS) (and list of Application Server Process (ASP) within each AS) connecting to external Signaling Gateway (SG) and also manages them.

```

<!--
===== -->
<!-- M3UA -->
<!-- ClientM3UAManagement is managing the ASP side commands -->
<!--
===== -->

<bean name="ClientM3UAManagement"
      class="org.mobicents.protocols.ss7.m3ua.impl.as.ClientM3UAManagement">
  <property name="persistDir">${jboss.server.data.dir}</property>
</bean>

<bean name="M3UAShellExecutor"
      class="org.mobicents.protocols.ss7.m3ua.impl.oam.M3UAShellExecutor">
  <property name="m3uaManagement">
    <inject bean="ClientM3UAManagement" />
  </property>
</bean>

<bean name="Mtp3UserPart"
      class="org.mobicents.protocols.ss7.m3ua.impl.as.ClientM3UAProcess">
```

```

<property name="clientM3UAManagement">
  <inject bean="ClientM3UAManagement" />
</property>
</bean>

```

`ClientM3UAManagement` when started looks for file's `m3ua-client.xml` and `m3ua-clientroute.xml`. The `m3ua-client.xml` contains serialized information about AS and ASP configured for this `ClientM3UAProcess`. The `m3ua-clientroute.xml` contains serialized information about defined routes.

Route maintains the availability status of a remote Point Code in the SS7 network via one or more Signaling Gateways. Application Hosts connecting to Signaling Gateways will require the configuration of Routes for each Remote Signaling Point Code they wish to communicate with.

3.4.2. Configuring dahdi

Dahdi based MTP layer will only be used when you have installed dahdi based SS7 hardware (Sangoma or Diguim cards). `DahdiLinksetFactory` is responsible to create new instances of corresponding `DahdiLinkset` when instructed by `LinksetManager`.

- `DahdiLinksetFactory`

```

<bean name="DahdiLinksetFactory"
  class="org.mobicenss7.hardware.dahdi.oam.DahdiLinksetFactory">
</bean>

```

`LinksetFactoryFactory` is just a call-back class listening for new factories deployed and maintains Map of available factory name vs factory. You should never touch this bean.

3.4.2.1. Configuring LinksetManager

`LinksetManager` is responsible for managing `Linkset` and `Link`.

```

<!-- ===== -->
<!-- Linkset manager Service -->
<!-- ===== -->
<bean name="LinksetManager"
  class="org.mobicenss7.linkset.oam.LinksetManager">

  <property name="linksetFactoryFactory">

```

```

    <inject bean="LinksetFactoryFactory" />
  </property>
  <property name="persistDir">${jboss.server.data.dir}</property>
</bean>

<bean name="LinksetExecutor"
  class="org.mobicenss7.linkset.oam.LinksetExecutor">
  <property name="linksetManager">
    <inject bean="LinksetManager" />
  </property>
</bean>

```

LinksetManager when started looks for file `linksetmanager.xml` containing serialized information about underlying linksets and links. The directory path is configurable by changing value of `persistDir` property.



Warning

`linksetmanager.xml` should never be edited by hand. Always use Shell Client to connect to JBoss Communications SS7 Stack and execute commands.

LinksetExecutor accepts the `linkset` commands and executes necessary operations.

3.4.3. Configuring dialogic

Dialogic based MTP layer will only be used when you have installed Dialogic cards. DialogicMtp3UserPart communicates with Dialogic hardware. Its assumed here that MTP3 and MTP2 is leveraged from Dialogic stack either on-board or on-host.

```

===== <!--
<!-- Dialogic Mtp3UserPart -->
===== <!--

<bean name="Mtp3UserPart" class="org.mobicenss7.hardware.dialogic.DialogicMtp3UserPart">
  <property name="sourceModuleId">61</
property> <property name="destinationModuleId">34</property>
</bean>

```

`sourceModuleId` is source module id and should match with configured in `system.txt` used by dialogic drivers. Here 61 is assigned for Mobicents process. `destinationModuleId` is destination module id. 34 is Dialogic MTP3 module id.

3.4.4. Configuring ShellExecutor

`ShellExecutor` is responsible for listening to incoming command. Received commands are executed on local resources to perform actions like creation and management of `SCCP` routing rule, creation and management of `Linkset`, management of `M3UA` stack.

```
<!-- ===== -->
<!-- Shell Service -->
<!-- ===== -->
<!-- Define Shell Executor -->
<bean name="ShellExecutor"
  class="org.mobicents.ss7.ShellExecutor">
  <property name="address">${jboss.bind.address}</property>
  <property name="port">3435</property>
  <!-- LinksetExecutor required only if dahdi based hardware is installed. -->
  <property name="linksetExecutor">
    <inject bean="LinksetExecutor" />
  </property>
  <!-- M3UAShellExecutor required only if M3UA will be leveraged. -->
  <property name="m3UAShellExecutor">
    <inject bean="M3UAShellExecutor" />
  </property>
  <!-- To manage SCCP resource and rules -->
  <property name="sccpExecutor">
    <inject bean="SccpExecutor" />
  </property>
</bean>
```

By default `ShellExecutor` listens at `jboss.bind.address` and port 3435. You may set the `address` property to any valid IP address that your host is assigned. The shell commands are exchanged over TCP/IP.



Note

To understand JBoss bind options look at [Installation_And_Getting_Started_Guide](http://docs.jboss.org/jbossas/docs/Installation_And_Getting_Started_Guide/5/html_single/index.html) [http://docs.jboss.org/jbossas/docs/Installation_And_Getting_Started_Guide/5/html_single/index.html]

3.4.5. Configuring SCCP

As name suggests `SccpStack` initiates the SCCP stack routines. Stack has following properties:

`localSpc`

property specifies the local signaling point code.

`ni`

specifies the network indicator that forms the part of service information octet (SIO)

`Router`

manages the route for SCCP. When Router is started it looks for file `sccprouter.xml` containing the serialized information about routes configured. The directory path is configurable by changing value of `persistDir` property

`SccpResource`

manages the remote resource for SCCP, for example Remote Subsystem Number and Remote Signalling Pointcode. When `SccpResource` is started it looks for file `sccpresource.xml` containing the serialized information about resources configured. The directory path is configurable by changing value of `persistDir` property

`mtp3UserPart`

specifies SS7 Level 3 to be used as transport medium(be it SS7 card or M3UA)

`SccpExecutor` accepts `sccp` commands and executes necessary operations

`SccpProvider` is bound to JNDI by SS7 Service and is used by upper layers

```

===== <!-- -->
<!-- SCCP Router Service -->
===== <!-- -->

<!--Define Router for SCCP -->
<bean name="Router" class="org.mobicens.protocols.ss7.sccp.impl.router.Router">
  <property name="persistDir">${boss.server.data.dir}</property>
</bean>

<bean name="SccpResource" class="org.mobicens.protocols.ss7.sccp.impl.SccpResource">
  <property name="persistDir">${boss.server.data.dir}</property>
</bean>

<bean name="SccpExecutor"
  class="org.mobicens.protocols.ss7.sccp.impl.oam.SccpExecutor">
  <property name="router">
    <inject bean="Router" />
  </property>
</bean>
```

```

    </property>
    <property name="sccpResource">
      <inject bean="SccpResource" />
    </property>
  </bean>

  <bean name="SccpStack" class="org.mobicenss7.sccp.impl.SccpStackImpl">
    <property name="localSpc">2</property>
    <property name="ni">2</property>
    <property name="router">
      <inject bean="Router" />
    </property>
    <property name="sccpResource">
      <inject bean="SccpResource" />
    </property>
    <property name="mtp3UserPart">
      <inject bean="Mtp3UserPart" />
    </property>
  </bean>

  <bean name="SccpProvider"
    class="org.mobicenss7.sccp.impl.SccpProviderImpl">
    <constructor factoryMethod="getSccpProvider">
      <factory bean="SccpStack" />
    </constructor>
  </bean>

```

3.4.6. Configuring SS7Service

SS7Service acts as core engine binding all the components together. To get holistic view of SS7 Service look at [Section 2.2, "SS7 Service"](#)

```

<!--
===== -->
<!-- Mobicenss7 SS7 Service -->
<!--
===== -->

<bean name="SS7Service" class="org.mobicenss7.SS7Service">
  <annotation>@org.jboss.aop.microcontainer.aspects.jmx.JMX(name=
    "org.mobicenss7:service=SS7Service",
    exposedInterface=org.mobicenss7.SS7ServiceMBean.class,
    registerDirectly=true)</annotation>
  <property name="jndiName">java:/mobicenss7/sccp</property>

```

```
<property name="stack">
  <inject bean="SccpProvider" />
</property>
</bean>
```

SS7 service binds SccpProvider to JNDI `java:/mobicents/ss7/sccp`. The JNDI name can be configured to any valid JNDI name specific to your application.

3.5. Installing JBoss Communications Signaling Gateway Binary

JBoss Communications Signaling Gateway Binary doesn't require any additional steps. You may copy `mobicents-sgw` to any folder of your choice.

3.6. Running JBoss Communications Signaling Gateway

In the Linux terminal or Windows command prompt, the JBoss Communications Signaling Gateway has started successfully if the last line of output is similar to the following

```
15:51:18,247 INFO [MainDeployer] [|||||] Mobicents Signaling Gateway:
release.version=1.0.0.BETA9 Started ]]]]]]]]
```

3.6.1. Starting JBoss Communications Signaling Gateway

Procedure 3.1. Running the JBoss Communications Signaling Gateway on Linux

1. Change the working directory to installation directory (the one in which the zip file's contents was extracted to)

```
downloads]$ cd "mobicents-ss7-<version>/ss7/mobicents-sgw"
```

2. (Optional) Ensure that the `bin/run.sh` start script is executable.

```
mobicents-sgw$ chmod +x bin/run.sh
```

3. Execute the `run.sh` Bourne shell script.

```
mobicents-sgw$ ./bin/run.sh
```

Procedure 3.2. Running the JBoss Communications Signaling Gateway on Windows

1. Using Windows Explorer, navigate to the `bin` subfolder in the installation directory.
2. The preferred way to start the JBoss Communications Signaling Gateway is from the Command Prompt. The command line interface displays details of the startup process, including any problems encountered during the startup process.

Open the Command Prompt via the **Start** menu and navigate to the correct folder:

```
C:\Users\<user>\My Downloads>cd "mobicents-ss7-<version>\ss7\mobicents-sgw"
```

3. Start the Gateway by executing one of the following files:

- `run.bat` batch file:

```
C:\Users\<user>\My Downloads\mms-standalone<version>>bin\run.bat
```

3.6.2. Start the Gateway With Alternate Configuration

Using `run.sh` without any arguments binds the gateway to `127.0.0.1`. To bind gateway to different ip, pass the ip address as value to `-b` command line option. For example to bind the server to `115.252.103.220`

```
mobicents-sgw$ ./bin/run.sh -b 115.252.103.220
```

3.6.3. Stopping

The only option to stop the gateway is by pressing `Ctrl c` and bringing down the JVM or kill the process.

3.7. Configuring JBoss Communications Signaling Gateway

Configuration is done through an XML descriptor named `sgw-beans.xml` and is located at `mobicents-sgw/deploy`,

3.7.1. Configuring Signaling Gateway Process

Signaling Gateway Process that contains the list of Remote Application Server (Rem AS) (and list of Remote Application Server Process (Rem ASP) within each rem AS) connecting to external Application Server (AS). `M3UAShellExecutor` accepts the `M3UA` commands and executes necessary operations.

```
<!-- ===== -->
<!-- Signalling Gateway Process Service      -->
<!-- ===== -->
<bean name="SgpImpl"
      class="org.mobicenss7.m3ua.impl.sg.SgpImpl">
  <constructor>
    <parameter>${sgw.bind.address}</parameter>
    <parameter>3434</parameter>
  </constructor>
</bean>

<bean name="M3UAShellExecutor"
      class="org.mobicenss7.m3ua.impl.oam.M3UAShellExecutor">
  <property name="sgp">
    <inject bean="SgpImpl" />
  </property>
</bean>
```

SgpImpl listens at ip `${sgw.bind.address}` and port 3434 for incoming request from ASP.

3.7.2. Configuring LinksetFactory

Concrete implementation of `LinksetFactory` is responsible to create new instances of corresponding `Linkset` when instructed by `LinksetManager`. JBoss Communications Signaling Gateway defines two linkset factories :

- `DahdiLinksetFactory`

```
<bean name="DahdiLinksetFactory"
      class="org.mobicenss7.hardware.dahdi.oam.DahdiLinksetFactory">
</bean>
```

- `DialogicLinksetFactory`

```
<bean name="DialogicLinksetFactory"
      class="org.mobicenss7.hardware.dialogic.oam.DialogicLinksetFactory">
```

```
</bean>
```

Its highly unlikely that you would require both the factories on same gateway. If you have dahdi based SS7 card installed, keep `DahdiLinksetFactory` and remove other. If you have dialogic based SS7 card installed, keep `DialogicLinksetFactory` and remove other.

`LinksetFactoryFactory` is just a call-back class listening for new factories deployed and maintains Map of available factory name vs factory. You should never touch this bean.

3.7.3. Configuring LinksetManager

`LinksetManager` is responsible for managing `Linkset` and `Link`.

```
<!-- ===== -->
<!-- Linkset manager Service -->
<!-- ===== -->
<bean name="LinksetManager"
      class="org.mobicenss.ss7.linkset.oam.LinksetManager">

    <property name="linksetFactoryFactory">
        <inject bean="LinksetFactoryFactory" />
    </property>
    <property name="persistDir">${linkset.persist.dir}</property>
</bean>

<bean name="LinksetExecutor"
      class="org.mobicenss.ss7.linkset.oam.LinksetExecutor">
    <property name="linksetManager">
        <inject bean="LinksetManager" />
    </property>
</bean>
```

`LinksetManager` when started looks for file `linksetmanager.xml` containing serialized information about underlying linksets and links. The directory path is configurable by changing value of `persistDir` property.



Warning

`linksetmanager.xml` should never be edited by hand. Always use Shell Client to connect to JBoss Communications Signaling Gateway and execute commands.

`LinksetExecutor` accepts the `linkset` commands and executes necessary operations.

3.7.4. Configuring ShellExecutor

ShellExecutor is responsible for listening to incoming command. Received commands are executed on local resources to perform actions like creation and management of Linkset, management of M3UA stack.

```
<!-- ===== -->
<!-- Shell Service -->
<!-- ===== -->
<bean name="ShellExecutor"
  class="org.mobicients.ss7.sgw.ShellExecutor">
  <property name="address">${sgw.bind.address}</property>
  <property name="port">3436</property>
  <property name="linksetExecutor">
    <inject bean="LinksetExecutor" />
  </property>
  <property name="m3UAShellExecutor">
    <inject bean="M3UAShellExecutor" />
  </property>
</bean>
```

By default ShellExecutor listens at `sgw.bind.address` and port 3436. You may set the `address` property to any valid IP address that your host is assigned. The shell commands are exchanged over TCP/IP.

3.7.5. Configuring SignalingGateway

SignalingGateway acts as core engine binding all the components together.

```
<!-- ===== -->
<!-- Mobicients Signaling Gateway -->
<!-- ===== -->
<bean name="SignalingGateway"
  class="org.mobicients.ss7.sgw.SignalingGateway">

  <property name="shellExecutor">
    <inject bean="ShellExecutor" />
  </property>

  <property name="nodallInterworkingFunction">
    <inject bean="NodallInterworkingFunction" />
  </property>
```

```
</bean>
```

The `NodalInterworkingFunction` sits between the SS7 network and IP network and routes messages to/from both the MTP3 and the M3UA layer, based on the SS7 DPC or DPC/SI address information

3.8. Setup from source

JBoss Communications SS7 Stack is an open source project, instructions for building from source are part of the manual! Building from source means you can stay on top with the latest features. Whilst aspects of JBoss Communications SS7 Stack are quite complicated, you may find ways to become contributors.

JBoss Communications SS7 Stack works with JDK1.5 and above (If using M3UA, JDK1.7 and above). you will also need to have the following tools installed. Minimum requirement version numbers provided.

- `Subversion Client 1.4` : Instructions for using SVN, including install, can be found at <http://subversion.tigris.org>
- `Maven 2.0.9` : Instructions for using Maven, including install, can be found at <http://maven.apache.org/>
- `Ant 1.7.0` : Instructions for using Ant, including install, can be found at <http://ant.apache.org>

3.8.1. Release Source Code Building

1. Downloading the source code

Use SVN to checkout a specific release source, the base URL is ?, then add the specific release version, lets consider 1.0.0.BETA9.

```
[usr]$ svn co ?/ss7-1.0.0.BETA9
```

2. Building the source code

Now that we have the source the next step is to build and install the source. JBoss Communications SS7 Stack uses Maven 2 to build the system. There are three profiles. Default one builds only java source. The other two profiles available "dahdilinux" and "dialogiclinux" additionally compile native modules.



Note

Native modules are supported only for linux OS for now.

Use "dahdilinux" profile if linux server on which this code is built already has dahdi module installed. Make sure you pass "include.zap" system property pointing to correct directory where dahdi is installed

```
[usr]$ cd ss7-1.0.0.BETA9
[usr]$ mvn install -Pdahdilinux -Dinclude.zap=/usr/include/dahdi
```

Use "dialogiclinux" profile if linux server on which this code is built already has dialogic module installed. Make sure you pass "include.dialogic" and "include.dialogic.gctlib" system property pointing to correct directory where dialogic libraries are installed. include.dialogic.gctlib points to directory where `gctload` is present (generally `/opt/dpklnx` for linux OS)

```
[usr]$ cd ss7-1.0.0.BETA9
[usr]$ mvn install -Pdialogiclinux -Dinclude.dialogic=/opt/dpklnx/INC -
Dinclude.dialogic.gctlib=/opt/dpklnx
```

To build JBoss Communications SS7 Stack without building any native libraries use

```
[usr]$ cd ss7-1.0.0.BETA9
[usr]$ mvn install
```

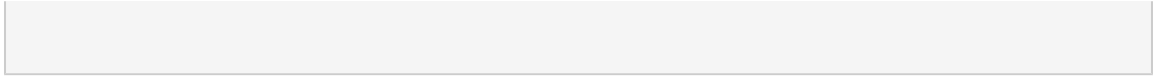


Note

If you are using JBoss Communications SS7 Stack without any native dependencies, JBoss Communications SS7 Stack can run on any OS.

Use Ant to build the binary .

```
[usr]$ cd ss7-1.0.0.BETA9/release
[usr]$ ant
```



3.8.2. Development Trunk Source Building

Similar process as for [Section 3.8.1, “Release Source Code Building”](#), the only change is the SVN source code URL, which is NOT AVAILABLE.

Hardware Setup

This chapter contains reference to configure hardware drivers for different types of SS7 cards.

JBoss Communications SS7 Stack supports dahdi based SS7 cards like diguim and sangoma. Generally dahdi based SS7 crads doesn't have MTP2/MTP3 support on board and relies on external software to provide these services.

JBoss Communications SS7 Stack also supports dialogic based SS7 cards which has on board support for MTP2/MTP3

4.1. Sangoma

To install Sangoma cards visit the Sangoma wiki at <http://wiki.sangoma.com/>

4.2. Diguim

To install Diguim cards visit the Diguim site at <http://www.digium.com/en/products/digital/>

4.3. Dialogic

To install Dialogic cards visit the Dialogic site at <http://www.dialogic.com/>

Shell Command Line

5.1. Introduction

JBoss Communications SS7 Stack provides Shell client to manage configuration of SS7 Stack Services. This chapter describes how to install and start client. Also it describes available commands and provides examples. To see examples of specific flow, to perform certain tasks, please refer to sections in chapter devoted to [Linksets](#), [SCCP](#) or [M3UA](#).

5.2. Starting

Shell client can be started with following command from `$JBASS_HOME/bin`:

```
[ $\$$ ] ./ss7-run.sh
```

Once console starts, it will print following information:

```
=====
Mobicents SS7: release.version=1.0.0-SNAPSHOT
This is free software, with components licensed under the GNU General Public
License
version 2 and other licenses. For further details visit http://mobicents.org
=====
mobicents>
```

The `ss7-run` script supports following options

```
Usage: SS7 [OPTIONS]
Valid Options
-v          Display version number and exit
-h          This help screen
```

Shell needs to connect to managed instance. Command to connect has following structure:

```
ss7 connect <IP> <PORT>
```

Example 5.1. Connec to remote machine

```
mobicents>ss7 connect 10.65.208.215 3435

mobicents(10.65.208.215:3435)>
```



Note

Host IP and port are optional, if not specified, shell will try to connect to 127.0.0.1:3435

Command to disconnect has following structure:

```
ss7 disconnect
```

Example 5.2. Disconnect

```
mobicents(10.65.208.215:3435)>ss7 disconnect

Bye
mobicents>
```

5.3. Linkset Management

Linksets are managed by `linkset` command. It allows to perform following:

- create linkset
- delete linkset
- activate linkset
- deactivate linkset
- create link
- delete link
- activate link

- deactivate link
- list state of linksets and present links

5.3.1. Create Linkset

Linkset can be create by issuing command with following structure:

```
linkset create <linkset-type> opc <point-code> apc <point-code> ni <network-id> <linkset-name>
```

or in case of dialogic:

```
linkset create dialogic opc <point-code> apc <point-code> ni <network-id> srcmod <src-mode>  
destmod <dest-mode> <linkset-name>
```

or in case of M3UA:

```
linkset create m3ua opc <point-code> apc <point-code> ni <network-id> as <as-name> <linkset-name>
```

Where:

linkset-type

refers to type of linkset to be created, ie. `dahdi` , `dialogic` or `m3ua` . Correct values depend on which linkset factories have been deployed.

point-code

is simply `MTP` point - either local(`opc`) or remote(`dpc`)

ni

is simply network identifier. It can have following values:

0

International network

1

Spare (for international use only)

2

National network

3

Reserved for national use

linkset-name

simple string name, which identifies linkset

as-name

Name of AS that M3UALinkset wrapps. Make sure that AS is already created as explained in [Section 5.5.2.1, “Create AS”](#)

Example 5.3. Linkset creation

```
mobicents(10.65.208.215:3435)>linkset create dahdi opc 1 apc 2 ni 0 linkset1
LinkSet successfully added
mobicents(10.65.208.215:3435)>linkset create dialogic opc 3 apc 4 ni 3
srcmod 1 destmod 2 linkset2
LinkSet successfully added
```

5.3.2. Remove Linkset

Linkset can be deleted by issuing command with following structure:

```
linkset delete <linkset-name>
```

Where:

linkset-name

is name set during link creation

Example 5.4. Linkset Removal

```
mobicents(10.65.208.215:3435)>linkset delete linkset1
LinkSet successfully deleted
```

5.3.3. Activate Linkset

Linkset can be activated by issuing command with following structure:

```
linkset activate <linkset-name>
```

Where:

linkset-name

is name set during link creation

Example 5.5. Linkset Activation

```
mobicents(10.65.208.215)>linkset activate linkset1
LinkSet activated successfully
```

5.3.4. Deactivate Linkset

Linkset can be deactivated by issuing command with following structure:

```
linkset deactivate <linkset-name>
```

Where:

linkset-name

is name set during link creation

Example 5.6. Linkset Deactivateion

```
mobicents(10.65.208.215)>linkset deactivate linkset1
LinkSet deactivated successfully
```

5.3.5. Create Link

Link can be created in Linkset by issuing command with following structure:

```
linkset link create span <span-num> code <code-num> channel <channel-num> <linkset-name>
<link-name>
```

Where:

span-num

integer number. It represents port number in card(indexed from 0).

code-num

link code(sls assigned to this link).

channel-num

integer number indicating time slot number(TDM time slot).

linkset-name

is name set during link creation.

link-name

name which identifies link in linkset.

Example 5.7.

```
mobicents(10.65.208.215:3435)>linkset link create span 1 code 1 channel 1
linkset1 link1
Link successfully added
```

5.3.6. Remove Link

Link can be removed from in Linkset by issuing command with following structure:

```
linkset link delete <linkset-name> <link-name>
```

Where:

linkset-name

is name set during link creation

link-name

name which identifies link in linkset

Example 5.8. Link Removal

```
mobicents(10.65.208.215:3435)>linkset link delete linkset1 link1
Link successfully deleted
```

5.3.7. Activate Link

Link can be activated by issuing command with following structure:

```
linkset link activate <linkset-name> <link-name>
```

Where:

linkset-name

is name set during link creation

link-name

name which identifies link in linkset

Example 5.9. Link Activation

```
mobicents(10.65.208.215:3435)>linkset link activate linkset1 link1
Link activated successfully
```

5.3.8. Deactivate Link

Link can be deactivated by issuing command with following structure:

```
linkset link deactivate <linkset-name> <link-name>
```

Where:

linkset-name

is name set during link creation

link-name

name which identifies link in linkset

Example 5.10. Link Deactivateion

```
mobicents(10.65.208.215:3435)>linkset link deactivate linkset1 link1
Link deactivated successfully
```

5.3.9. Show status

Linkset and Link's status can be viewed by issuing command with following structure:

```
linkset show
```

Example 5.11. Linkset Status

```
mobicents(10.65.208.215:3435)>linkset show
linkset1      dahdi      opc=1          apc=2          ni=0
state=UNAVAILABLE
    link1      span=1     channelId=1    code=1    state=UNAVAILABLE
```

The possible state of Linkset are

- UNAVAILABLE : Indicates the linkset does not have any “available” links and cannot transport traffic
- SHUTDOWN : Indicates the linkset has been shutdown in the configuration
- AVAILABLE : Indicates the linkset has at least one available link and can carry traffic

The possible state of Link are

- UNAVAILABLE : Indicates the link is not available to carry traffic. This can occur if the link is remotely or locally inhibited by a user. It can also be unavailable if MTP2 has not been able to successfully activate the link connection.
- SHUTDOWN : Indicates the link has been shutdown in the configuration.
- AVAILABLE : Indicates the link is active and able to transport traffic
- FAILED : A link is FAILED when the link is not shutdown but is unavailable at layer2 for some reason. For example Initial Alignment failed or the link test messages sent by MTP3 are not being acknowledged.

5.4. SCCP Management

SCCP provides connectionless and connection-oriented network services. This includes address(GTT) translation and routing, flow control segmentation and reassembly.

A global title is an address (e.g., a dialed 800 number, calling card number, or mobile subscriber identification number) which is translated by SCCP into a destination point code and subsystem number. A subsystem number uniquely identifies an application at the destination signaling point. SCCP is used as the transport layer for TCAP -based services

As SCCP acts as message router, it requires means to configure routing information. CLI provides way to easily manage routing rules information in JBoss Communications SCCP implementation.

User should also configure the remote subsystem number and remote signaling pointcode. In some cases where global title is used, SCCP will only require configuring of remote signaling pointcode and configuring of remote subsystem is not required.

5.4.1. Rule Management

SCCP routing rules are managed by `sccp rule` command. It allows to perform following:

- `sccp rule create`
- `sccp rule modify`
- `sccp rule delete`
- `sccp rule show`

5.4.1.1. Create Rule

Rule can be create by issuing command with following structure:

```
sccp rule create <id> <mask> <address-indicator> <point-code> <subsystem-number>  
<translation-type> <numbering-plan>  
<nature-of-address-indicator> <digits> <primary-address-id> <backup-address-id>
```

This command should be specified after `primary_add` and `backup_add` are configured. Please refer [Section 5.4.2, “Address Management”](#) on how to configure `primary_add` and `backup_add`

<id>

A unique number to identify this rule

<mask>

mask defines which part of the originally dialed digits remains in the translated digits and which part is replaced by the digits from primary or backup address. mask is divided into sections by separator /. The number of sections in mask should be equal to sections in digits passed in this command and sections in primary or backup address

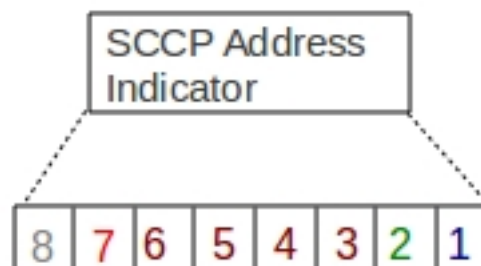
Table 5.1. mask definitions

Mnemonic	Function
-	Ignore
/	Separator used to split the mask into sections.
K	Keep the original dialed digits of this section into translated digits
R	Replace the original dialed digits of this section with same section from primary or backup address into translated digits

<address-indicator>

The address indicator is the first field in SCCP Party Address(called/calling) and is one octet in length. Its function is to indicate which information elements are present so that the address can be interpreted, in other words, it indicates the type of addressing information that is to be found in the address field. The addressing information from original global title is then compared with passed address information to match the rule.

- **'1' Bit:** PC Indicator (1=included)
- **'2' Bit:** SSN Indicator (1=included)
- **3 - 6 Bit:** GT Indicator
 - 0000 = GT Not Included
 - 0001 = GT Includes Nature of Address,
 - 0010 = GT Includes Translation Type
 - 0011 = GT Includes Translation Type, Numbering Plan and Encoding Scheme
 - 0100 = GT Includes Translation Type, Numbering Plan, Encoding Scheme, and Nature of Address Indicator
- **'7' Bit:** Routing Indicator
 - 0 = Route on GT
 - 1 = Route on PC + SSN
- **'8' Bit:** Reserved for National Use



SCCP Address Indicator

<point-code>

Point code. This is ignored if bit 0 of address-indicator is not set.

<subsystem-number>

Subsystem Number. This is ignored if bit 1 of address-indicator is not set.

<translation-type>

Translation type. This is ignored if GT Indicator is 0000 or 0001

Table 5.2. Translation Type Values

Value	Description
0	Unknown
1 to 63	International Service
64 to 127	Spare
128 to 254	National Network Specific
255	Reserved for Expansion

<numbering-plan>

The Number Plan (NP) field specifies the numbering plan that the address information follows. This is ignored if GT Indicator is 0000, 0001 or 0010

<nature-of-address-indicator>

The Nature of Address Indicator (NAI) field defines the address range for a specific numbering plan. This is only used if GT Indicator is 0100

<digits>

Specifies the string of digits divided into subsections using separator '/' depending on if mask contains separator. The dialed digits should match with theses digits as per rule specified bellow

Table 5.3. digit pattern

Value	Description
-	padding - ignored
*	wildcard - matches any number of digits
?	wildcard - matches exactly one digit
/	sparator used to split the digit pattern into sections. Each section can be processed

Value	Description
	differently as specified by mask parameter.

<primary-address-id>

Identifies the SCCP Address used as the primary translation

<backup-address-id>

Identifies the SCCP Address used as the backup translation incase if pointcode specified by primary address is not available

Example 5.12. SCCP Rule creation

```
mobicents(10.65.208.215:3435)>sccp rule create 1 R 71 2 8 0 0 3 123456789 1
mobicents(10.65.208.215:3435)>sccp rule create 2 R 71 2 8 0 0 3 123456789 1
1
```

5.4.1.2. Delete SCCP Rule

SCCP Rule can be deleted by issuing command with following structure:

```
sccp rule delete <id>
```

Where:

<id>

is id set during rule creation

Example 5.13. SCCP Rule Removal

```
mobicents(10.65.208.215:3435)>sccp rule delete 1
Rule successfully removed
```

5.4.1.3. Show SCCP Rule

Rule's can be viewed by issuing command with following structure:

```
sccp rule show <id>
```

Where:

<id>

id is optional. If passed only rule matching the id will be shown, else all the rules will be shown

5.4.2. Address Management

The command is used to define primary or backup address of translation. The global title address information of this command is combined with the global title being translated by examining the mask provided in the `sccp rule create` command. The syntax remains same except for primary address `sccp primary_add` is used and for backup address `sccp backup_add` is used

- `sccp primary_add create`
`sccp backup_add create`
- `sccp primary_add modify`
`sccp backup_add modify`
- `sccp primary_add delete`
`sccp backup_add delete`
- `sccp primary_add show`
`sccp backup_add show`

5.4.2.1. Create Address

Address can be create by issuing command with following structure:

- For primary address

```
sccp primary_add create <id> <address-indicator> <point-code> <subsystem-number>
<translation-type> <numbering-plan>
<nature-of-address-indicator> <digits>
```

- For backup address

```
sccp backup_add create <id> <address-indicator> <point-code> <subsystem-number>
<translation-type> <numbering-plan>
```

<nature-of-address-indicator> <digits>

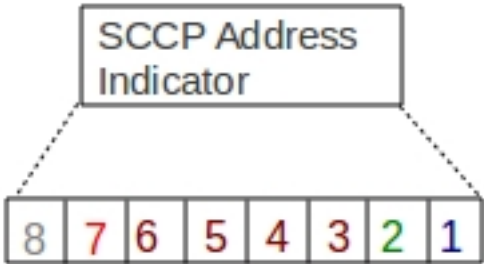
<id>

A unique number to identify this address

<address-indicator>

The address indicator is the first field in SCCP Party Address(called/calling) and is one octet in length. Its function is to indicate which information elements are present so that the address can be interpreted, in other words, it indicates the type of addressing information that is to be found in the address field. The addressing information from original global title is then compared with passed address information to match the rule.

- **'1' Bit:** PC Indicator (1=included)
- **'2' Bit:** SSN Indicator (1=included)
- **3 - 6 Bit:** GT Indicator
 - 0000 = GT Not Included
 - 0001 = GT Includes Nature of Address,
 - 0010 = GT Includes Translation Type
 - 0011 = GT Includes Translation Type, Numbering Plan and Encoding Scheme
 - 0100 = GT Includes Translation Type, Numbering Plan, Encoding Scheme, and Nature of Address Indicator
- **'7' Bit:** Routing Indicator
 - 0 = Route on GT
 - 1 = Route on PC + SSN
- **'8' Bit:** Reserved for National Use



SCCP Address Indicator

<point-code>

Point code. This is ignored if bit 0 of address-indicator is not set.

<subsystem-number>

Subsystem Number. This is ignored if bit 1 of address-indicator is not set.

<translation-type>

Translation type. This is ignored if GT Indicator is 0000 or 0001

Table 5.4. Translation Type Values

Value	Description
0	Unknown

Value	Description
1 to 63	International Service
64 to 127	Spare
128 to 254	National Network Specific
255	Reserved for Expansion

<numbering-plan>

The Number Plan (NP) field specifies the numbering plan that the address information follows. This is ignored if GT Indicator is 0000, 0001 or 0010

<nature-of-address-indicator>

The Nature of Address Indicator (NAI) field defines the address range for a specific numbering plan. This is only used if GT Indicator is 0100

<digits>

The global title address information to translate to, specified as string of digits divided into subsections using separator '/' depending on if mask contains separator.

In addition the digits string can contain

Table 5.5. Address digit

Value	Description
-	padding - ignore
/	Separator to split the digits into sections. Each section is processed differently as specified by the mask in <code>sccp rule create</code> command.

Example 5.14. SCCP Primary Address creation

```
mobicents(10.65.208.215:3435)>sccp primary_add create 1 71 2 8 0 0 3
123456789
```

Example 5.15. SCCP Backup Address creation

```
mobicents(10.65.208.215:3435)>sccp backup_add create 1 71 3 8 0 0 3
123456789
```

5.4.2.2. Delete Address

- For primary address

```
sccp primary_add delete <id>
```

- For backup address

```
sccp backup_add delete <id>
```

Where:

<id>

is id set during address creation

Example 5.16. Primary Address Removal

```
mobicents(10.65.208.215:3435)>sccp primary_add delete 1
Rule successfully removed
```

Example 5.17. Backup Address Removal

```
mobicents(10.65.208.215:3435)>sccp backup_add delete 1
Rule successfully removed
```

5.4.2.3. Show Address

Address's can be viewed by issuing command with following structure:

- For primary address

```
sccp primary_add show <id>
```

- For backup address

```
sccp backup_add show <id>
```

Where:

<id>

id is optional. If passed only address matching the id will be shown, else all the addresses will be shown

5.4.3. Remote Signaling Point Management

SCCP resources includes remote signaling point and remote subsystem. Each remote signaling point that SCCP can communicate with must be configured using `sccp rsp` command

- `sccp rsp create`
- `sccp rsp modify`
- `sccp rsp delete`
- `sccp rsp show`

5.4.3.1. Create Remote Signaling Point

Remote signaling point can be create by issuing command with following structure:

```
sccp rsp create <id> <remote-spc> <rspc-flag> <mask>
```

<id>

A unique number to identify this remote signaling point

<remote-spc>

The remote signaling point

<rspc-flag>

32 bit value. Not used for now. Reserved for future

<mask>

32 bit value. Not used for now. Reserved for future

Example 5.18. Remote Signalin Point creation

```
mobicents(10.65.208.215:3435)>sccp rsp create 1 6477 0 0
```

5.4.3.2. Delete Remote Signaling Point

```
sccp rsp delete <id>
```

Where:

<id>

is id set during remote signaling point creation

Example 5.19. Remote Signaling Point removal

```
mobicents(10.65.208.215:3435)>sccp rsp delete 1
```

5.4.3.3. Show Remote Signaling Point/s

Remote signaling point can be viewed by issuing command with following structure:

```
sccp rsp show <id>
```

Where:

<id>

id is optional. If passed only remote signaling point matching the id will be shown, else all the addresses will be shown

5.4.4. Remote Sub-System Management

SCCP resources includes remote signaling point and remote subsystem. Each remote subsystem that SCCP can communicate with must be configured using `sccp rss` command

- `sccp rss create`

- `sccp rss modify`
- `sccp rss delete`
- `sccp rss show`

This command should be specified after remote signaling point is configured. Please refer [Section 5.4.3, “Remote Signaling Point Management”](#) on how to configure remote signaling point

5.4.4.1. Create Remote Sub-System

Remote subsystem can be created by issuing command with following structure:

```
sccp rss create <id> <remote-spc> <remote-ssn> <rss-flag>
```

<id>

A unique number to identify this remote subsystem

<remote-spc>

The remote signaling point where this remote subsystem is deployed

<remote-ssn>

The remote subsystem number

<rss-flag>

32 bit value. Not used for now. Reserved for future

Example 5.20. Remote Sub-System creation

```
mobicents(10.65.208.215:3435)>sccp rss create 1 6477 8 0
```

5.4.4.2. Delete Remote Sub-System

```
sccp rss delete <id>
```

Where:

<id>

is id set during remote subsystem creation

Example 5.21. Remote Sub-System removal

```
mobicents(10.65.208.215:3435)>sccp rss delete 1
```

5.4.4.3. Show Remote Sub-System/s

Remote subsystem can be viewed by issuing command with following structure:

```
sccp rss show <id>
```

Where:

<id>

id is optional. If passed only remote subsystem matching the id will be shown, else all will be shown

5.5. M3UA Management

Commands to manage JBoss Communications M3UA Stack used on Application Server (AS) side differs from commands to manage JBoss Communications M3UA Stack used on Signaling Gateway side (SGW).

5.5.1. M3UA Management - SGW side

M3UA - SGW side is managed by `m3ua` command. It allows to perform following:

- `m3ua ras create`
- `m3ua rasp create`
- `m3ua ras add`

5.5.1.1. Create Remote AS

Remote Application Server (AS) can be created by issuing command with following structure:

```
m3ua ras create rc <routing-context> rk dpc <destination point code> opc <originating point code>  
si <service indicator> traffic-mode <traffic mode> <ras-name>
```

Where:

routing-context

refers to Routing Context. Make sure its unique for each Remote AS created. The same Routing Context should be used while creating AS on M3UA Stack used on AS side.

routing key

Routing Key describes a set of SS7 parameters and parameter values that uniquely define the range of signaling traffic to be handled by a particular Application Server. Routing Key includes

destination point code

The Destination Point Code parameter is mandatory, and it identifies the Destination Point Code of incoming SS7 traffic. dpc is integer number

originating point code

The Originating Point Code parameter contains one or more (comma separated) SS7 OPC entries, and its format is the same as for the Destination Point Code parameter. OPC is optional and absence of the OPC parameter in the Routing Key indicates the use of any OPC value.

service indicator

The optional service indicator field contains one or more (comma separated) Service Indicators from the values described bellow. The absence of the SI parameter in the Routing Key indicates the use of any SI value, excluding of course MTP management.

3

SCCP

4

TUP

5

ISUP

9

Broadband ISUP

10

Satellite ISUP

12

AAL type 2 Signalling

13

Bearer Independent Call Control (BICC)

14

Gateway Control Protocol

traffic-mode

The optional Traffic Mode Type parameter identifies the traffic mode. If not specified Override is used as default. It can take either of loadshare or override.

ras-name

Rem AS name

Example 5.22. Rem AS creation

```
mobicents(127.0.0.1:3436)>m3ua ras create rc 100 rk dpc 123 RAS1
Successfully created AS name=RAS1
mobicents(127.0.0.1:3436)>m3ua ras create rc 101 rk dpc 456 opc 987 si 3
traffic-mode loadshare RAS2
Successfully created AS name=RAS2
```

5.5.1.2. Create Remote ASP

Remote Application Server Process (ASP) can be create by issuing command with following structure:

```
m3ua rasp create ip <ip> port <port> <rasp-name>
```

Where:

ip

ip address of Application Server Process from AS side trying to connect to this Rem ASP

port

port of Application Server Process from AS side trying to connect to this Rem ASP

Example 5.23. Rem ASP creation

```
mobicents(127.0.0.1:3436)>m3ua rasp create ip 127.0.0.1 port 2345 RASP1
Successfully created ASP name=RASP1
```

5.5.1.3. Assign Remote ASP to Remote AS

Remote Application Server Process (ASP) can be assigned to Remote Application Server (AS) with following structure

```
m3ua ras add <ras-name> <rasp-name>
```

Where:

ras name

name of Remote AS created earlier

rasp name

name of Remote ASP created earlier

Example 5.24. Add Rem ASP to Rem AS

```
mobicents(127.0.0.1:3436)>m3ua ras add RAS1 RASP1
Successfully added ASP name=RASP1 to AS name=RAS1
```

5.5.2. M3UA Management - AS side

M3UA - AS side is managed by `m3ua` command. It allows to perform following:

- `m3ua as create`
- `m3ua asp create`
- `m3ua as add`
- `m3ua route add`
- `m3ua route remove`
- `m3ua route show`
- `m3ua asp start`
- `m3ua asp stop`

5.5.2.1. Create AS

Application Server (AS) can be created by issuing command with following structure:

```
m3ua as create rc <routing-context> <as-name>
```

Where:

routing-context

refers to Routing Context already configured on M3UA stack on SGW side.

name

simple string name, which identifies AS. Make sure this is unique

Example 5.25. AS creation

```
mobicents(127.0.0.1:3435)>m3ua as create rc 100 AS1  
Successfully created AS name=AS1
```

5.5.2.2. Create ASP

Application Server Process (ASP) can be created by issuing command with following structure:

```
m3ua asp create ip <ip> port <port> remip <rem-ip> remport <rem-port> <asp-name>
```

Where:

ip

local ip address of Application Server Process. This ip address should match with ip address configured when Remote ASP was created.

port

local port of Application Server Process. This port should match with port configured when Remote ASP was created.

remip

The ip address of Mobicents Signaling Gateway listening for incoming connection requests

remport

The port of Mobicents Signaling Gateway listening for incoming connection requests

asp-name

Name of this ASP. It should be unique

Example 5.26. ASP creation

```
mobicents(127.0.0.1:3435)>m3ua asp create ip 127.0.0.1 port 2345 remip  
127.0.0.1 remport 3434 ASP1  
Successfully created AS name=ASP1
```

5.5.2.3. Assign ASP to AS

Application Server Process (ASP) can be assigned to Application Server (AS) with following structure

```
m3ua as add <as-name> <asp-name>
```

Where:

as name

name of AS created earlier

asp name

name of ASP created earlier

Example 5.27. Add ASP to AS

```
mobicents(127.0.0.1:3435)>m3ua as add AS1 ASP1  
Successfully added ASP name=ASP1 to AS name=AS1
```

5.5.2.4. Add Route

Configure the destination point code that message will be routed to

```
m3ua route add <dpc> <as-name>
```

Where:

dpc

Destination point code

as name

name of AS created earlier

Example 5.28. Add Route

```
mobicents(127.0.0.1:3435)>m3ua route add 6447 AS1
```

5.5.2.5. Remove Route

Remove the As configured for the destination point code

```
m3ua route remove <dpc> <as-name>
```

Where:

dpc

Destination point code

as name

name of AS assigned to route message for this dpc

Example 5.29. Remove Route

```
mobicents(127.0.0.1:3435)>m3ua route remove 6447 AS1
```

5.5.2.6. Show Route

Show all the routes configured

```
m3ua route show
```

Example 5.30. Show Route

```
mobicents(127.0.0.1:3435)>m3ua route show
```

5.5.2.7. Start ASP

Application Server Process (ASP) can be started with following structure

```
m3ua asp start <asp-name>
```

Where:

asp name

name of ASP created earlier. Make sure ASP you are trying to start is assigned to at least one AS

Example 5.31. Start ASP

```
mobicents(127.0.0.1:3435)>m3ua asp start ASP1
```

```
Successfully started ASP name=ASP1
```

5.5.2.8. Stop ASP

Application Server Process (ASP) can be stopped with following structure

```
m3ua asp stop <asp-name>
```

Where:

asp name

name of ASP started earlier.

Example 5.32. Stop ASP

```
mobicents(127.0.0.1:3435)>m3ua asp stop ASP1  
Successfully stopped ASP name=ASP1
```


ISUP

ISUP(ISDN User Part or ISUP) is part of SS7 which is used to establish telephone calls and manage call switches(*exchanges*). Exchanges are connected via E1 or T1 trunks. Each trunk is divided by means of TDM into time slots. Each time slot is distinguished as circuit. Circuits (identified by code) are used as medium to transmit voice data between user equipment (or exchanges if more than one is involved).

ISUP allows not only to setup a call, but to exchange information about exchange state and its resources(circuits).



Note

JBoss Communications ISUP is based on ITU-T Q.76x series of documents.

6.1. ISUP Configuration

JBoss Communications ISUP stack is configured with simple properties. Currently following properties are supported:

Table 6.1. ISUP Configuration options

Name	Default value	Value range	Description
ni	None, must be provided	0-3	Sets value of network indicator that should be used by stack.
localspc	None, must be provided	0 - (2 ¹⁴)-1	Sets local signaling point code. It will be used as OPC for outgoing signaling units.
t1	4s	4s - 15s	Sets T1 value. Started when REL is sent. See A.1/Q.764
t5	5 min.	5min - 15 min	Sets T5 value. Started when initial REL is sent. See A.1/Q.764
t7	20s	20s -30s	Sets T7 value. (Re)Started when Address Message is sent. See A.1/Q.764

Name	Default value	Value range	Description
t12	15s	15s - 60s	Sets T12 value. Started when BLO is sent. See A.1/Q.764
t13	5min	5min - 15min	Sets T13 value. Started when initial BLO is sent. See A.1/Q.764
t14	5s	15s - 60s	Sets T14 value. Started when UBL is sent. See A.1/Q.764
t15	5min	5min - 15min	Sets T15 value. Started when initial UBL is sent. See A.1/Q.764
t16	5s	15s - 60s	Sets T16 value. Started when RSC is sent. See A.1/Q.764
t17	5min	5min - 15min	Sets T17 value. Started when initial RSC is sent. See A.1/Q.764
t18	5s	15s - 60s	Sets T18 value. Started when CGB is sent. See A.1/Q.764
t19	5min	5min - 15min	Sets T19 value. Started when initial CGB is sent. See A.1/Q.764
t20	5s	15s - 60s	Sets T20 value. Started when CGU is sent. See A.1/Q.764
t21	5min	5min - 15min	Sets T21 value. Started when initial CGU is sent. See A.1/Q.764
t22	5s	15s - 60s	Sets T22 value. Started when GRS is sent. See A.1/Q.764
t23	5min	5min - 15min	Sets T23 value. Started when initial

Name	Default value	Value range	Description
			GRS is sent. See A.1/Q.764
t28	10s	10s	Sets T28 value. Started when CQM is sent. See A.1/Q.764
t33	12s	12s - 15s	Sets T33 value. Started when INR is sent. See A.1/Q.764

Note that before start user must provide two interfaces to stack:

Mtp3UserPart

implementation of transport layer which should be used by stack

CircuitManager

circuit manager implementation. This interface stores information on mapping between **CIC**(Circuit Identification Code) and **DPC**(Destination Point Code) used as destination for outgoing messages.

6.2. ISUP Usage

The `org.mobicenss7.isup.ISUPStack` interface defines the methods required to represent ISUP Protocol Stack. `ISUPStack` exposes `org.mobicenss7.isup.ISUPProvider`. This interface defines the methods that will be used by any registered ISUP User application implementing the `org.mobicenss7.isup.ISUPListener` to listen ISUP events(messages and timeouts).

6.3. ISUP Example

Below is simple example of stack usage:

```
import java.io.ByteArrayOutputStream;
import java.io.IOException;
import java.util.ArrayList;
import java.util.List;
import java.util.Properties;

import org.mobicenss7.isup.ISUPEvent;
import org.mobicenss7.isup.ISUPListener;
import org.mobicenss7.isup.ISUPProvider;
import org.mobicenss7.isup.ISUPStack;
```

```
import org.mobicenss7.isup.ISUPTimeoutEvent;
import org.mobicenss7.isup.ParameterException;
import org.mobicenss7.isup.impl.ISUPStackImpl;
import org.mobicenss7.isup.message.ISUPMessage;

import org.mobicenss7.linkset.oam.Layer4;
import org.mobicenss7.linkset.oam.Linkset;

public class ISUPTest implements ISUPListener
{

    protected ISUPStack stack;
    protected ISUPProvider provider;

    protected Linkset isupLinkSet;

    public void setUp() throws Exception {

        this.isupLinkSet = ....; //same linksets as in SS7Service
        this.stack = new ISUPStackImpl();
        this.stack.configure(getSpecificConfig());
        this.provider = this.stack.getIsupProvider();
        this.provider.addListener(this);
        Mtp3UserPart userPart = // create with proper factory, dahdii, dialogi, m3ua
        this.stack.setMtp3UserPart(userPart);
        CircuitManagerImpl circuitManager = new CircuitManagerImpl();
        circuitManager.addCircuit(1, 431613); // CIC - 1, DPC for it - 431613

        this.stack.setCircuitManager(circuitManager);
        this.stack.start();

    }

    public void onEvent(ISUPEvent event) {
        ISUPMessage msg = event.getMessage();
        switch(msg.getCircuitIdentificationCode().getCIC())
        {
            case AddressCompleteMessage._COMMAND_CODE:
                //only complete
                break;
            case ConnectedMessage._COMMAND_CODE:
```

```
        case AnswerMessage._COMMAND_CODE:
            //we are good to go
            ConnectedNumber cn = (ConnectedNumber)msg.getParameter(ConnectedNumber._PARAMETER_CODE);
            //do something
            break;
        case ReleaseMessage._COMMAND_CODE:
            //remote end does not want to talk
            ReleaseCompleteMessage rlc = provider.getMessageFactory().createRLC();
            rlc.setCircuitIdentificationCode(msg.getCircuitIdentificationCode());
            rlc.setCauseIndicators( ((ReleaseComplete)msg).getCauseIndicators());
            provider.sendMessage(rlc);

    }

}

public void onTimeout(ISUPTimeoutEvent event) {
    switch(event.getTimerId())
    {
        case ISUPTimeoutEvent.T1:
            //do something
            break;
        case ISUPTimeoutEvent.T7:
            //do even more
            break;
    }
}

}
```


SCCP

The Signaling Connection Control Part (SCCP) is defined in ITU-T Recommendations Q.711-Q.716. SCCP sits on top of Message Transfer Part 3 (MTP3) in the SS7 protocol stack. The SCCP provides additional network layer functions to provide transfer of noncircuit-related (NCR) signaling information, application management procedures and alternative, more flexible methods of routing.

7.1. Routing Management

SCCP provides a routing function that allows signaling messages to be routed to a signaling point based on dialed digits, for example. This capability is known as Global Title Translation (GTT), which translates what is known as a global title (for example, dialed digits for a toll free number) into a signaling point code and a subsystem number so that it can be processed at the correct application.

Routing rules are configured using the Command Line Interface as explained [Section 5.4, “SCCP Management”](#)

7.1.1. GTT Configuration

GTT is performed in two stages. First is matching the rule and second is actual translation.

For matching the rule, the called party address global title digits are matched with <digits> configured in `sccp rule create` [Section 5.4.1.1, “Create Rule”](#) command above. Once the digits match actual translation is done

Matching rule

As explained in `sccp rule create` [Section 5.4.1.1, “Create Rule”](#) command the <digits> can be divided into sections using the "/" separate character. Each section defines set of digits to be matched. Wild card * can be used to match any digits and ? can be used to match exactly one digit

For example Rule is to match starting 4 digits (should be 1234) and doesn't care for rest; the <digits> in the command will be 1234/*. If the Rule is such that starting 3 digits should be 123, doesn't care for other three digits but last two digits should be 78; the <digits> in the command will be 123/???/78. If digit to digit matching is needed the the <digits> in the command will be exact digits to be matched without sections.

Translation

For translation each section in <mask> defined in `sccp rule create` command defines how replacement operation is performed. If <mask> defines K, the originally dialed digits are kept and if <mask> defines R the digits from primary address or back address are used. The primary/backup address should always define the point code and the translated address will always have this point code. If the primary/backup address defines the subsystem number the

translated address will also have this subsystem number. The address-indicator of translated address is always from primary/backup address. See bellow examples

Example 1 : Remove the Global Title and add PC and SSN

Element	Address Indicator	PC	SSN	TT	NP	NAI	Digits
Dialed Address	0 0 0 1 0 0 0 0			1			123456789
Rule Address	0 0 0 1 0 0 0 0			1			123456789
Rule mask							R
Primary Address	0 1 0 0 0 0 1 1	123	8				-
Translated Address	0 1 0 0 0 0 1 1	123	8				

GTT - Example 1

Example 2 : Partial match

Match a eight digit number starting "800", followed by any four digits, then "9". If the translated digits is not null and if the primary/backup address has no Global Title, the Global Title from dialed address is kept with new translated digits.

Element	Address Indicator	PC	SSN	TT	NP	NAI	Digits
Dialed Address	0 0 0 1 0 0 0 0			1			80012349
Rule Address	0 0 0 1 0 0 0 0			1			800/????/9
Rule mask							R/K/R
Primary Address	0 0 0 0 0 0 0 1	123					123/---/4
Translated Address	0 0 0 1 0 0 0 1	123		1			12312344

GTT - Example 2

Example 3 : Partial match

Match "800800", followed by any digits Remove the first six digits. Keep any following digits in the Input. Add a PC(123) and SSN (8).

Element	Address Indicator	PC	SSN	TT	NP	NAI	Digits
Dialed Address	0 0 0 1 0 0 0 0			1			80080012345
Rule Address	0 0 0 1 0 0 0 0			1			800800/*
Rule mask							R/K
Primary Address	0 0 0 0 0 0 1 1	123	8				-/-
Translated Address	0 0 0 1 0 0 1 1	123	8	1			12345

GTT - Example 3

Example 4 : Partial match

Match any digits keep the digits in the and add a PC(123) and SSN (8). If the translated digits is not null and if the primary/backup address has no Global Title, the Global Title from dialed address is kept with new translated digits.

Element	Address Indicator	PC	SSN	TT	NP	NAI	Digits
Dialed Address	0 0 0 1 0 0 0 0			1			4414257897897
Rule Address	0 0 0 1 0 0 0 0			1			*
Rule mask							K
Primary Address	0 0 0 0 0 0 1 1	123	8				-
Translated Address	0 0 0 1 0 0 1 1	123	8	1			4414257897897

GTT - Example 4

7.2. SCCP Usage

The instance of `org.mobicenss7.sccp.SccpStack` acts as starting point. All the sccp messages sent by SCCP User Part are routed as per the rule configured in Router



Note

The term SCCP User Part refers to the applications that use SCCP's services.

The SCCP User Part gets handle to `SccpStack` by doing JNDI look-up as explained in [Section 7.3, "Access Point"](#)

`SccpStack` exposes `org.mobicenss7.sccp.SccpProvider` that interacts directly with `SccpStack`. This interface defines the methods that will be used by SCCP User Part to send `org.mobicenss7.sccp.message.SccpMessage` and register `org.mobicenss7.sccp.SccpListener`'s to listen for incoming SCCP messages.

SCCP User Part registers SccpListener for specific local subsystem number. For every incoming SccpMessage, if the called subsystem matches with this local subsystem, the corresponding SccpListner is called.

SccpProvider also exposes `org.mobicens.protocols.ss7.sccp.message.MessageFactory` and `org.mobicens.protocols.ss7.sccp.parameter.ParameterFactory` to create new concrete SccpMessage viz., `org.mobicens.protocols.ss7.sccp.message.UnitData` or `org.mobicens.protocols.ss7.sccp.message.XUnitData` passing the corresponding parameters created by leveraging ParameterFactory.

7.3. Access Point

SS7 Service provides user with access point to SCCP protocol/stack.

To get handle to SccpStack do the JNDI look-up passing the JNDI name configured in SS7 service as explained in [Section 3.4.6, "Configuring SS7Service"](#)

```
private static SccpProvider getSccpProvider() throws NamingException {  
  
    // no arg is ok, if we run in JBoss  
    InitialContext ctx = new InitialContext();  
    try {  
        String providerJndiName = "/mobicens/ss7/sccp";  
        return ((SccpStack) ctx.lookup(providerJndiName)).getSccpProvider();  
    } finally {  
        ctx.close();  
    }  
}
```

7.4. SCCP User Part Example

Below is SCCP User Part example listening for incoming SCCP message and sending back new message

```
public class Test implements SccpListener {  
  
    private SccpProvider sccpProvider;  
    private SccpAddress localAddress;
```

```

private static SccpProvider getSccpProvider() throws NamingException {

    // no arg is ok, if we run in JBoss
    InitialContext ctx = new InitialContext();
    try {
        String providerJndiName = "/mobicents/ss7/sccp";
        return ((SccpStack) ctx.lookup(providerJndiName)).getSccpProvider();
    } finally {
        ctx.close();
    }
}

public void start() throws Exception {

    this.sccpProvider = getSccpProvider();

    int translationType = 0;
    int subSystemNumber = 0;

    GlobalTitle gt = GlobalTitle.getInstance(translationType,
        NumberingPlan.ISDN_MOBILE, NatureOfAddress.NATIONAL, "1234");

    localAddress = new SccpAddress(gt, 0);

    this.sccpProvider.registerSccpListener(localAddress, this);
}

public void stop() {
    this.sccpProvider.deregisterSccpListener(localAddress);
}

public void onMessage(SccpMessage message) {

    if (message.getType() == MessageType.UDT) {
        throw new IllegalArgumentException("Dont like UDT");
    } else if (message.getType() == MessageType.XUDT) {
        XUnitData xudt = (XUnitData) message;
        localAddress = ((XUnitData) message).getCalledPartyAddress();
        SccpAddress remoteAddress = ((XUnitData) message)
            .getCallingPartyAddress();

        // now decode content

```

```
byte[] data = xudt.getData();

// some data encoded in
CallRequest cr = new CallRequest(data);

byte[] answerData;

if (cr.getCallee().equals(this.localAddress)) {
    EstablishCallAnswer eca = new EstablishCallAnswer(cr);
    answerData = eca.encode();
} else {
    TearDownCallAnswer tdca = new TearDownCallAnswer(cr);
    answerData = tdca.encode();
}

HopCounter hc = this.sccpProvider.getParameterFactory()
    .createHopCounter(5);

XUnitData sccpAnswer = this.sccpProvider
    .getMessageFactory()
    .createXUnitData(hc, xudt.getProtocolClass(),
        message.getCallingPartyAddress(), this.localAddress);

this.sccpProvider.send(sccpAnswer);

}

}

}
```

TCAP

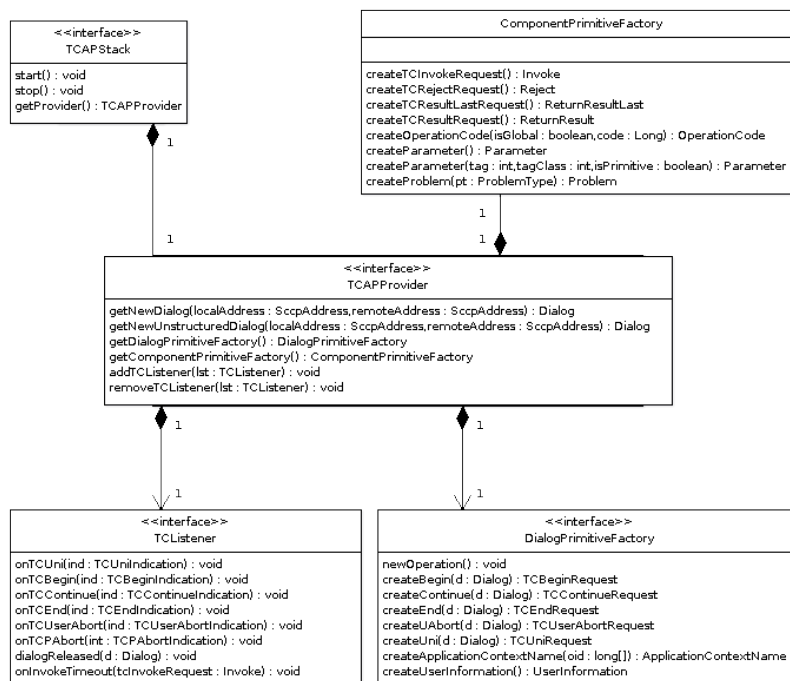
The Transaction Capabilities Application Part (TCAP) is defined in ITU-T Recommendations Q.771-Q.775. TCAP allows services at network nodes to communicate with each other using an agreed-upon set of data elements. Its primary purpose is to facilitate multiple concurrent dialogs between the same sub-systems on the same machines, using Transaction IDs to differentiate these, similar to the way TCP ports facilitate multiplexing connections between the same IP addresses on the Internet.

8.1. JBoss Communications SS7 Stack TCAP Usage

The `org.mobicenss7.protocols.ss7.tcap.api.TCAPStack` interface defines the methods required to represent TCAP Protocol Stack. `TCAPStack` exposes `org.mobicenss7.protocols.ss7.tcap.api.TCAPProvider` that interacts directly with `TCAPStack`. `TCAPProvider` defines methods that will be used by TCAP User Part to create new `org.mobicenss7.protocols.ss7.tcap.api.tc.dialog.Dialog` to be sent across network. TCAP User Part also allows to register `org.mobicenss7.protocols.ss7.tcap.api.TCListener` to listen TCAP messages.

`TCAPProvider` also exposes `org.mobicenss7.protocols.ss7.tcap.api.DialogPrimitiveFactory` to create dialog primitives and `org.mobicenss7.protocols.ss7.tcap.api.ComponentPrimitiveFactory` to create components. Components are a means of invoking an operation at a remote node

The UML Class Diagram looks like



JBoss Communications SS7 Stack TCAP Class Diagram

The `org.mobicenss7.tcap.TCAPStackImpl` is concrete implementation of `TCAPStack`. The TCAP User Part creates instance of `TCAPStackImpl` passing the reference of `SccpProvider` and new instance of `SccpAddress` representing address to which bind listener. The TCAP stack creates internaly JBoss Communications MAP Stack implementation. Passed `SccpAddress` is used to match against incoming messages destination address.

```
SccpProvider sccpProvider = getSccpProvider(); //JNDI lookup of SCCP Stack and get
Provider
SccpAddress localAddress createLocalAddress();

TCAPStack tcapStack = new TCAPStackImpl(sccpPprovider, localAddress);

...

private SccpAddress createLocalAddress()
{
    int translationType = 0;

    int subSystemNumber = 0;

    GlobalTitle gt = GlobalTitle.getInstance(translationType,
    NumberingPlan.ISDN_MOBILE, NatureOfAddress.NATIONAL, "1234");

    SccpAddress localAddress = new SccpAddress(gt, 0);
    return localAddress;
}
```

The reference to `SccpProvider` is received from `SccpStack`. To get handle to `SccpStack` do the JNDI look-up passing the JNDI name configured in SS7 service as explained in [Section 7.3, “Access Point”](#)

The TCAP User Part should register the concrete implementation of `TCListener` with `TCAPProvider` to listen for incoming TCAP messages.

```
public class Client implements TCListener{
```

```

.....
tcapProvider = tcapStack.getProvider();
tcapProvider.addTCListener(this);
.....
}

```

The TCAP User Part leverages TCAPProvider to create new Dialog. The component's between the nodes are exchanged within this Dialog

```
clientDialog = this.tcapProvider.getNewDialog(thisAddress, remoteAddress);
```

The TCAP User Part leverages ComponentPrimitiveFactory to create new components. These components are sent using the dialog

```

//create some INVOKE
Invoke invoke = cpFactory.createTCInvokeRequest();
invoke.setInvokeld(this.clientDialog.getNewInvokeld());
invoke.setOperationCode(cpFactory.createOperationCode(true,new Long(12)));
//no parameter
this.clientDialog.sendComponent(invoke);

```

8.2. JBoss Communications SS7 Stack TCAP User Part Example

Below is TCAP User Part example. This example creates dialog and exchanges messages withing structured dialog. Refer to source for function calls:

```

public class Client implements TCListener{
    //encoded Application Context Name
    public static final long[] _ACN_ = new long[] { 0, 4, 0, 0, 1, 0, 19, 2 };
}

```

```
private TCAPStack stack;
private SccpAddress thisAddress;
private SccpAddress remoteAddress;

private TCAPProvider tcapProvider;
private Dialog clientDialog;

Client(SccpProvider sccpPprovider, SccpAddress thisAddress, SccpAddress remoteAddress) {
    super();
    this.stack = new TCAPStackImpl(sccpPprovider, thisAddress); //pass address, so stack can
register in SCCP
    this.runningTestCase = runningTestCase;
    this.thisAddress = thisAddress;
    this.remoteAddress = remoteAddress;
    this.tcapProvider = this.stack.getProvider();
    this.tcapProvider.addTCListener(this);
}

private static SccpProvider getSccpProvider() throws NamingException {

    // no arg is ok, if we run in JBoss
    InitialContext ctx = new InitialContext();
    try {
        String providerJndiName = "/mobicents/ss7/sccp";
        return ((SccpStack) ctx.lookup(providerJndiName)).getSccpProvider();
    } finally {
        ctx.close();
    }
}

public void start() throws TCAPException, TCAPSendException {
    clientDialog = this.tcapProvider.getNewDialog(thisAddress, remoteAddress);
    ComponentPrimitiveFactory cpFactory = this.tcapProvider.getComponentPrimitiveFactory();

    //create some INVOKE
    Invoke invoke = cpFactory.createTCInvokeRequest();
    invoke.setInvokeld(this.clientDialog.getNewInvokeld());

    invoke.setOperationCode(cpFactory.createOperationCode(true, new Long(12)));
    //no parameter
    this.clientDialog.sendComponent(invoke);

    ApplicationContextName acn = this.tcapProvider.getDialogPrimitiveFactory()
```

```
.createApplicationContextName(_ACN_);
//UI is optional!
TCBeginRequest tcbr = this.tcapProvider.getDialogPrimitiveFactory().createBegin(this.clientDialog);
tcbr.setApplicationContextName(acn);
this.clientDialog.send(tcbr);
}

public void dialogReleased(Dialog d) {

}

public void onInvokeTimeout(Invoke tcInvokeRequest) {

}

public void onTCBegin(TCBeginIndication ind) {

}

public void onTCContinue(TCContinueIndication ind) {

    //send end
    TCEndRequest end = this.tcapProvider.getDialogPrimitiveFactory().createEnd(ind.getDialog());
    end.setTermination(TerminationType.Basic);
    try {
        ind.getDialog().send(end);
    } catch (TCAPSendException e) {
        throw new RuntimeException(e);
    }
}

public void onTCEnd(TCEndIndication ind) {
    //should not happen, in this scenario, we send data.
}

public void onTCUni(TCUniIndication ind) {
    //not going to happen
}

}
```

```
public void onTCPAbort(TCPAbortIndication ind) {
    // TODO Auto-generated method stub

}

public void onTCUserAbort(TCUserAbortIndication ind) {
    // TODO Auto-generated method stub

}

public static void main(String[] args)
{
    int translationType = 0;
    int subSystemNumber = 0;
    GlobalTitle gt = GlobalTitle.getInstance(translationType,
        NumberingPlan.ISDN_MOBILE, NatureOfAddress.NATIONAL, "1234");
    SccpAddress localAddress = new SccpAddress(gt, 0);

    gt = GlobalTitle.getInstance(translationType,
        NumberingPlan.ISDN_MOBILE, NatureOfAddress.NATIONAL, "1572582");
    SccpAddress remoteAddress = new SccpAddress(gt, 0);
    Client c = new Client(getSccpProvider(), localAddress, remoteAddress);
}
}
```

MAP

Mobile application part (MAP) is the protocol that is used to allow the GSM network nodes within the Network Switching Subsystem (NSS) to communicate with each other to provide services, such as roaming capability, text messaging (SMS), Unstructured Supplementary Service Data (USSD) and subscriber authentication. MAP provides an application layer on which to build the services that support a GSM network. This application layer provides a standardized set of services. MAP uses the services of the SS7 network, specifically the Signaling Connection Control Part (SCCP) and the Transaction Capabilities Application Part (TCAP)

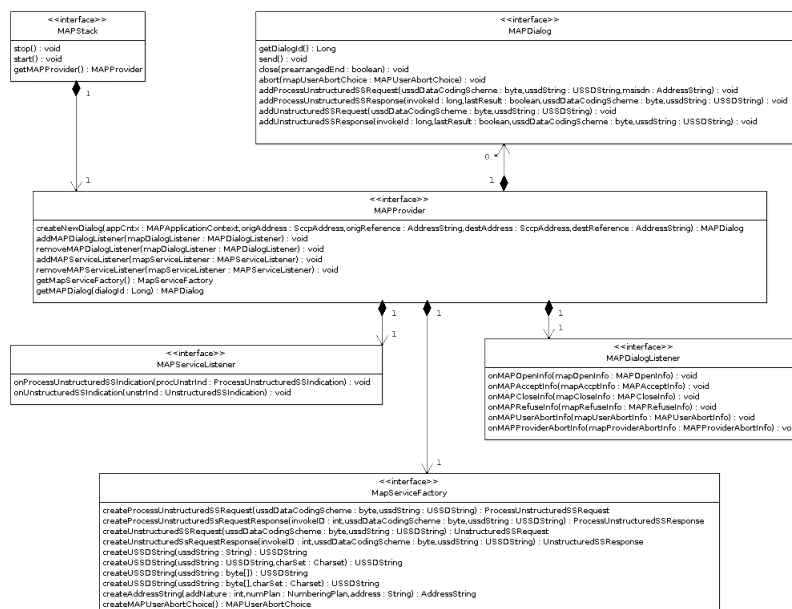


Important

For better understanding of this chapter please read GSM 09.02.

9.1. SS7 Stack MAP Usage

The `org.mobicens.protocols.ss7.map.api.MAPStack` interface defines the methods required to represent MAP Protocol Stack. MAPStack exposes `org.mobicens.protocols.ss7.map.api.MAPProvider` that interacts directly with MAPStack. This interface defines the methods that will be used by any registered MAP User application implementing the `org.mobicens.protocols.ss7.map.api.MAPDialogListener` and `org.mobicens.protocols.ss7.map.api.MAPServiceListener` interface to listen MAP messages and dialogue handling primitives. The class diagram looks like



JBoss Communications SS7 Stack MAP Class Diagram



Note

JBoss Communications SS7 Stack MAP has implementation for USSD Message only. Any contribution to implement message specific to SMS or other are welcome. We will provide you all the help that you may need initially.

The `org.mobicens.protocols.ss7.map.MAPStackImpl` is concrete implementation of `MAPStack`. The MAP User application creates instance of `MAPStackImpl` passing the reference of `SccpProvider` and new instance of `SccpAddress` representing address to which bind listener. This address will be used to match against destination address in `SCCP` messages.

```
SccpProvider sccpProvider = getSccpProvider(); //JNDI lookup of SCCP Stack and get
Provider
SccpAddress localAddress createLocalAddress();

MAPStackImpl mapStack = new MAPStackImpl(sccpPprovider, localAddress);

...

private SccpAddress createLocalAddress()
{
    int translationType = 0;

    int subSystemNumber = 0;

    GlobalTitle gt = GlobalTitle.getInstance(translationType,

    NumberingPlan.ISDN_MOBILE, NatureOfAddress.NATIONAL, "1234");

    SccpAddress localAddress = new SccpAddress(gt, 0);
    return localAddress;
}
```

The reference to `SccpProvider` is received from `SccpStack`. To get handle to `SccpStack` do the JNDI look-up passing the JNDI name configured in SS7 service as explained in [Section 7.3, “Access Point”](#)

The MAP User application should register the concrete implementation of `MAPDialogListener` and `MAPServiceListener` with `MAPProvider` to listen for incoming MAP Dialog and MAP Primitive messages.

```
public class MAPExample implements MAPDialogListener, MAPServiceListener {
    ....
    mapProvider = mapStack.getMapProvider();
    mapProvider.addMAPDialogListener(this);
    mapProvider.addMAPServiceListener(this);
    ....
}
```

The MAP User Application leverages `MapServiceFactory` to create instance of `USSDString` and `AddressString`

```
MapServiceFactory servFact = mapProvider.getMapServiceFactory();
USSDString ussdString = servFact.createUSSDString("*125*+31628839999#",
    null);

AddressString msisdn = this.servFact.createAddressString(
    AddressNature.international_number, NumberingPlan.ISDN,
    "31628838002");
```

The MAP User Application leverages `MAPProvider` to create new `MAPDialog` and send USSD message

```
// First create Dialog
MAPDialog mapDialog = mapProvider.createNewDialog(
    MAPApplicationContext.networkUnstructuredSsContextV2,
    destAddress, destReference, origAddress, origReference);

byte ussdDataCodingScheme = 0x0f;

// USSD String: *125*+31628839999#
```

```
// The Charset is null, here we let system use default Charset (UTF-7 as
// explained in GSM 03.38. However if MAP User wants, it can set its own
// impl of Charset
USSDString ussdString = servFact.createUSSDString("*125*+31628839999#",
    null);

AddressString msisdn = this.servFact.createAddressString(
    AddressNature.international_number, NumberingPlan.ISDN,
    "31628838002");

mapDialog.addProcessUnstructuredSSRequest(ussdDataCodingScheme,
    ussdString, msisdn);

// This will initiate the TC-BEGIN with INVOKE component
mapDialog.send();
```

9.2. SS7 Stack MAP Usage

The complete example looks like

```
public class MAPExample implements MAPDialogListener, MAPServiceListener {

    private MAPStack mapStack;
    private MAPProvider mapProvider;

    MapServiceFactory servFact;

    SccpAddress destAddress = null;

    // The address created by passing the AddressNature, NumberingPlan and
    // actual address
    AddressString destReference = servFact.createAddressString(
        AddressNature.international_number, NumberingPlan.land_mobile,
        "204208300008002");

    SccpAddress origAddress = null;

    AddressString origReference = servFact.createAddressString(
        AddressNature.international_number, NumberingPlan.ISDN,
        "31628968300");
```

```

MAPExample(SccpProvider sccpPprovider, SccpAddress address,
    SccpAddress remoteAddress) {
    origAddress = address;
    destAddress = remoteAddress;

    mapStack = new MAPStackImpl(sccpPprovider, origAddress);
    mapProvider = mapStack.getMapProvider();
    servFact = mapProvider.getMapServiceFactory();

    mapProvider.addMAPDialogListener(this);
    mapProvider.addMAPServiceListener(this);
}

private static SccpProvider getSccpProvider() throws NamingException {

    // no arg is ok, if we run in JBoss
    InitialContext ctx = new InitialContext();
    try {
        String providerJndiName = "/mobicents/ss7/sccp";
        return ((SccpStack) ctx.lookup(providerJndiName)).getSccpProvider();
    } finally {
        ctx.close();
    }
}

private static SccpAddress createLocalAddress() {
    GlobalTitle gt = GlobalTitle
        .getInstance(
            NatureOfAddress.NATIONAL.getValue(),
            org.mobicents.protocols.ss7.indicator.NumberingPlan.ISDN_MOBILE,
            NatureOfAddress.NATIONAL, "1234");

    return new SccpAddress(gt, 0); // 0 is Sub-System number
}

private static SccpAddress createRemoteAddress() {
    GlobalTitle gt = GlobalTitle
        .getInstance(
            NatureOfAddress.NATIONAL.getValue(),
            org.mobicents.protocols.ss7.indicator.NumberingPlan.ISDN_MOBILE,
            NatureOfAddress.NATIONAL, "1572582");
}

```

```
        return new SccpAddress(gt, 0); // 0 is Sub-System number
    }

    public void run() throws Exception {

        // First create Dialog
        MAPDialog mapDialog = mapProvider.createNewDialog(
            MAPApplicationContext.networkUnstructuredSsContextV2,
            destAddress, destReference, origAddress, origReference);

        // The dataCodingScheme is still byte, as I am not exactly getting how
        // to encode/decode this.
        byte ussdDataCodingScheme = 0x0f;

        // USSD String: *125*+31628839999#
        // The Charset is null, here we let system use default Charset (UTF-7 as
        // explained in GSM 03.38. However if MAP User wants, it can set its own
        // impl of Charset
        USSDString ussdString = servFact.createUSSDString("*125*+31628839999#",
            null);

        AddressString msisdn = this.servFact.createAddressString(
            AddressNature.international_number, NumberingPlan.ISDN,
            "31628838002");

        mapDialog.addProcessUnstructuredSSRequest(ussdDataCodingScheme,
            ussdString, msisdn);

        // This will initiate the TC-BEGIN with INVOKE component
        mapDialog.send();
    }

    public void onMAPAcceptInfo(MAPAcceptInfo mapAccptInfo) {
        // TODO Auto-generated method stub
    }

    public void onMAPCloseInfo(MAPCloseInfo mapCloseInfo) {
        // TODO Auto-generated method stub
    }

    public void onMAPOpenInfo(MAPOpenInfo mapOpenInfo) {
        // TODO Auto-generated method stub
    }
}
```

```
}

public void onMAPProviderAbortInfo(MAPProviderAbortInfo mapProviderAbortInfo) {
    // TODO Auto-generated method stub
}

public void onMAPRefuseInfo(MAPRefuseInfo mapRefuseInfo) {
    // TODO Auto-generated method stub
}

public void onMAPUserAbortInfo(MAPUserAbortInfo mapUserAbortInfo) {
    // TODO Auto-generated method stub
}

public void onProcessUnstructuredSSIndication(
    ProcessUnstructuredSSIndication procUnstrInd) {
    // TODO Auto-generated method stub
}

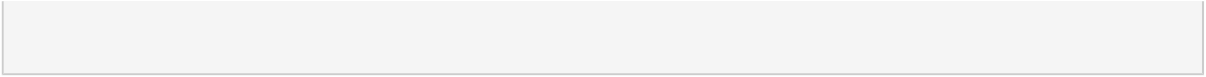
public void onUnstructuredSSIndication(UnstructuredSSIndication unstrInd) {
    // TODO Auto-generated method stub
}

public static void main(String[] args) throws Exception {
    SccpProvider sccpProvider = getSccpProvider(); // JNDI lookup of SCCP

    SccpAddress localAddress = createLocalAddress();
    SccpAddress remoteAddress = createRemoteAddress();

    MAPExample example = new MAPExample(sccpProvider, localAddress,
        remoteAddress);

    example.run();
}
}
```



Appendix A. Java Development Kit (JDK): Installing, Configuring and Running

The **JBoss Communications Platform** is written in Java; therefore, before running any **JBoss Communications** server, you must have a working Java Runtime Environment (JRE) or Java Development Kit (JDK) installed on your system. In addition, the JRE or JDK you are using to run **JBoss Communications** must be version 5 or higher¹.

Should I Install the JRE or JDK? Although you can run **JBoss Communications** servers using the Java Runtime Environment, we assume that most users are developers interested in developing Java-based, **JBoss Communications**-driven solutions. Therefore, in this guide we take the tact of showing how to install the full Java Development Kit.

Should I Install the 32-Bit or the 64-Bit JDK, and Does It Matter? Briefly stated: if you are running on a 64-Bit Linux or Windows platform, you should consider installing and running the 64-bit JDK over the 32-bit one. Here are some heuristics for determining whether you would rather run the 64-bit Java Virtual Machine (JVM) over its 32-bit cousin for your application:

- Wider datapath: the pipe between RAM and CPU is doubled, which improves the performance of memory-bound applications when using a 64-bit JVM.
- 64-bit memory addressing gives virtually unlimited (1 exabyte) heap allocation. However large heaps affect garbage collection.
- Applications that run with more than 1.5 GB of RAM (including free space for garbage collection optimization) should utilize the 64-bit JVM.
- Applications that run on a 32-bit JVM and do not require more than minimal heap sizes will gain nothing from a 64-bit JVM. Barring memory issues, 64-bit hardware with the same relative clock speed and architecture is not likely to run Java applications faster than their 32-bit cousin.

Note that the following instructions detail how to download and install the 32-bit JDK, although the steps are nearly identical for installing the 64-bit version.

Downloading. You can download the Sun JDK 5.0 (Java 2 Development Kit) from Sun's website: http://java.sun.com/javase/downloads/index_jdk5.jsp. Click on the **Download** link next to "JDK 5.0 Update <x>" (where <x> is the latest minor version release number). On the next page, select your language and platform (both architecture—whether 32- or 64-bit—and operating

¹ At this point in time, it is possible to run most **JBoss Communications** servers, such as the JAIN SLEE, using a Java 6 JRE or JDK. Be aware, however, that presently the XML Document Management Server does not run on Java 6. We suggest checking the JBoss Communications web site, forums or discussion pages if you need to inquire about the status of running the XML Document Management Server with Java 6.

system), read and agree to the Java Development Kit 5.0 License Agreement, and proceed to the download page.

The Sun website will present two download alternatives to you: one is an RPM inside a self-extracting file (for example, `jdk-1_5_0_16-linux-i586-rpm.bin`), and the other is merely a self-extracting file (e.g. `jdk-1_5_0_16-linux-i586.bin`). If you are installing the JDK on Red Hat Enterprise Linux, Fedora, or another RPM-based Linux system, we suggest that you download the self-extracting file containing the RPM package, which will set up and use the SysV service scripts in addition to installing the JDK. We also suggest installing the self-extracting RPM file if you will be running **JBoss Communications** in a production environment.

Installing. The following procedures detail how to install the Java Development Kit on both Linux and Windows.

Procedure A.1. Installing the JDK on Linux

- Regardless of which file you downloaded, you can install it on Linux by simply making sure the file is executable and then running it:

```
~]$ chmod +x "jdk-1_5_0_<minor_version>-linux-<architecture>-rpm.bin"
~]$ ./"jdk-1_5_0_<minor_version>-linux-<architecture>-rpm.bin"
```



You Installed Using the Non-RPM Installer, but Want the SysV Service Scripts

If you download the non-RPM self-extracting file (and installed it), and you are running on an RPM-based system, you can still set up the SysV service scripts by downloading and installing one of the `-compat` packages from the JPackage project. Remember to download the `-compat` package which corresponds correctly to the minor release number of the JDK you installed. The `compat` packages are available from <http://jpackage.hmdc.harvard.edu/JPackage/1.7/generic/RPMS.non-free/>.



Important

You do not need to install a `-compat` package in addition to the JDK if you installed the self-extracting RPM file! The `-compat` package merely performs the same SysV service script set up that the RPM version of the JDK installer does.

Procedure A.2. Installing the JDK on Windows

- Using Explorer, simply double-click the downloaded self-extracting installer and follow the instructions to install the JDK.

Configuring. Configuring your system for the JDK consists in two tasks: setting the `JAVA_HOME` environment variable, and ensuring that the system is using the proper JDK (or JRE) using the `alternatives` command. Setting `JAVA_HOME` usually overrides the values for `java`, `javac` and `java_sdk_1.5.0` in `alternatives`, but we will set them all just to be safe and consistent.

Setting the `JAVA_HOME` Environment Variable on Generic Linux

After installing the JDK, you must ensure that the `JAVA_HOME` environment variable exists and points to the location of your JDK installation.

Setting the `JAVA_HOME` Environment Variable on Linux. You can determine whether `JAVA_HOME` is set on your system by `echo`ing it on the command line:

```
~]$ echo $JAVA_HOME
```

If `JAVA_HOME` is not set already, then you must set its value to the location of the JDK installation on your system. You can do this by adding two lines to your personal `~/.bashrc` configuration file. Open `~/.bashrc` (or create it if it doesn't exist) and add a line similar to the following one anywhere inside the file:

```
export JAVA_HOME="/usr/lib/jvm/jdk1.5.0_<version>"
```

You should also set this environment variable for any other users who will be running **JBoss Communications** (any environment variables exported from `~/.bashrc` files are local to that user).

Setting `java`, `javac` and `java_sdk_1.5.0` Using the `alternatives` command

Selecting the Correct System JVM on Linux using `alternatives`. On systems with the `alternatives` command, including Red Hat Enterprise Linux and Fedora, you can easily choose which JDK (or JRE) installation you wish to use, as well as which `java` and `javac` executables should be run when called.

As the root user, call `/usr/sbin/alternatives` with the `--config java` option to select between JDKs and JREs installed on your system:

```
root@localhost ~]$ /usr/sbin/alternatives --config java
```

There are 3 programs which provide 'java'.

Selection	Command
1	/usr/lib/jvm/jre-1.5.0-gcj/bin/java
2	/usr/lib/jvm/jre-1.6.0-sun/bin/java
*+ 3	/usr/lib/jvm/jre-1.5.0-sun/bin/java

Enter to keep the current selection[+], or type selection number:

In our case, we want to use the Sun JDK, version 5, that we downloaded and installed, to run the `java` executable. In the `alternatives` information printout above, a plus (+) next to a number indicates the one currently being used. As per `alternatives`' instructions, pressing **Enter** will simply keep the current JVM, or you can enter the number corresponding to the JVM you would prefer to use.

Repeat the procedure above for the `javac` command and the `java_sdk_1.5.0` environment variable, as *the root user*:

```
~]$ /usr/sbin/alternatives --config javac
```

```
~]$ /usr/sbin/alternatives --config java_sdk_1.5.0
```

Setting the `JAVA_HOME` Environment Variable on Windows

For information on how to set environment variables in Windows, refer to <http://support.microsoft.com/kb/931715>.

Testing. Finally, to make sure that you are using the correct JDK or Java version (5 or higher), and that the `java` executable is in your `PATH`, run the `java -version` command in the terminal from your home directory:

```
~]$ java -version
java version "1.5.0_16"
Java(TM) 2 Runtime Environment, Standard Edition (build 1.5.0_16-b03)
Java HotSpot(TM) Client VM (build 1.5.0_16-b03, mixed mode, sharing)
```

Uninstalling. There is usually no reason (other than space concerns) to remove a particular JDK from your system, given that you can switch between JDKs and JREs easily using `alternatives`, and/or by setting `JAVA_HOME`.

Uninstalling the JDK on Linux. On RPM-based systems, you can uninstall the JDK using the `yum remove <jdk_rpm_name>` command.

Uninstalling the JDK on Windows. On Windows systems, check the JDK entry in the `Start` menu for an uninstall command, or use `Add/Remove Programs`.

Appendix B. Setting the JBOSS_HOME Environment Variable

The **JBoss Communications Platform (JBoss Communications)** is built on top of the **JBoss Enterprise Application Platform**. You do not need to set the `JBOSS_HOME` environment variable to run any of the **JBoss Communications Platform** servers *unless* `JBOSS_HOME` is *already* set.

The best way to know for sure whether `JBOSS_HOME` was set previously or not is to perform a simple check which may save you time and frustration.

Checking to See If JBOSS_HOME is Set on Unix. At the command line, `echo $JBOSS_HOME` to see if it is currently defined in your environment:

```
~]$ echo $JBOSS_HOME
```

The **JBoss Communications Platform** and most JBoss Communications servers are built on top of the **JBoss Enterprise Application Platform (JBoss Enterprise Application Platform)**. When the **JBoss Communications Platform** or JBoss Communications servers are built *from source*, then `JBOSS_HOME` *must* be set, because the JBoss Communications files are installed into (or “over top of” if you prefer) a clean **JBoss Enterprise Application Platform** installation, and the build process assumes that the location pointed to by the `JBOSS_HOME` environment variable at the time of building is the **JBoss Enterprise Application Platform** installation into which you want it to install the JBoss Communications files.

This guide does not detail building the **JBoss Communications Platform** or any JBoss Communications servers from source. It is nevertheless useful to understand the role played by **JBoss AS** and `JBOSS_HOME` in the JBoss Communications ecosystem.

The immediately-following section considers whether you need to set `JBOSS_HOME` at all and, if so, when. The subsequent sections detail how to set `JBOSS_HOME` on Unix and Windows



Important

Even if you fall into the category below of *not needing* to set `JBOSS_HOME`, you may want to for various reasons anyway. Also, even if you are instructed that you do *not need* to set `JBOSS_HOME`, it is good practice nonetheless to check and make sure that `JBOSS_HOME` actually *isn't* set or defined on your system for some reason. This can save you both time and frustration.

You **DO NOT NEED** to set `JBOSS_HOME` if...

- ...you have installed the **JBoss Communications Platform** binary distribution.

- ...you have installed a JBoss Communications server binary distribution *which bundles JBoss Enterprise Application Platform*.

You **MUST** set `JBOSS_HOME` if...

- ...you are installing the **JBoss Communications Platform** or any of the JBoss Communications servers *from source*.
- ...you are installing the **JBoss Communications Platform** binary distribution, or one of the JBoss Communications server binary distributions, which *do not* bundle **JBoss Enterprise Application Platform**.

Naturally, if you installed the **JBoss Communications Platform** or one of the JBoss Communications server binary releases which *do not* bundle **JBoss Enterprise Application Platform**, yet requires it to run, then you should install before setting `JBOSS_HOME` or proceeding with anything else.

Setting the `JBOSS_HOME` Environment Variable on Unix. The `JBOSS_HOME` environment variable must point to the directory which contains all of the files for the **JBoss Communications Platform** or individual JBoss Communications server that you installed. As another hint, this topmost directory contains a `bin` subdirectory.

Setting `JBOSS_HOME` in your personal `~/ .bashrc` startup script carries the advantage of retaining effect over reboots. Each time you log in, the environment variable is sure to be set for you, as a user. On Unix, it is possible to set `JBOSS_HOME` as a system-wide environment variable, by defining it in `/etc/bashrc`, but this method is neither recommended nor detailed in these instructions.

Procedure B.1. To Set `JBOSS_HOME` on Unix...

1. Open the `~/ .bashrc` startup script, which is a hidden file in your home directory, in a text editor, and insert the following line on its own line while substituting for the actual install location on your system:

```
export JBOSS_HOME="/home/<username>/<path>/<to>/<install_directory>"
```

2. Save and close the `.bashrc` startup script.
3. You should `source` the `.bashrc` script to force your change to take effect, so that `JBOSS_HOME` becomes set for the current session¹.

```
~]$ source ~/.bashrc
```

4. Finally, ensure that `JBOSS_HOME` is set in the current session, and actually points to the correct location:

¹ Note that any other terminals which were opened prior to your having altered `.bashrc` will need to `source` `~/ .bashrc` as well should they require access to `JBOSS_HOME`.



Note

The command line usage below is based upon a binary installation of the **JBoss Communications Platform**. In this sample output, JBOSS_HOME has been set correctly to the *topmost_directory* of the **JBoss Communications** installation. Note that if you are installing one of the standalone **JBoss Communications** servers (with **JBoss AS** bundled!), then JBOSS_HOME would point to the *topmost_directory* of your server installation.

```
~]$ echo $JBOSS_HOME  
/home/silas/<path>/<to>/<install_directory>
```

Setting the JBOSS_HOME Environment Variable on Windows. The JBOSS_HOME environment variable must point to the directory which contains all of the files for the JBoss Communications Platform or individual JBoss Communications server that you installed. As another hint, this topmost directory contains a `bin` subdirectory.

For information on how to set environment variables in recent versions of Windows, refer to <http://support.microsoft.com/kb/931715>.

Appendix C. Revision History

Revision History

Revision 1.0	Wed June 2 2010	BartoszBaranowski
Creation of the JBoss Communications SS7 Stack User Guide.		
Revision 1.1	Tue Dec 21 2010	AmitBhayani
Creation of the JBoss Communications SS7 Stack User Guide.		

Index

F

feedback, viii
